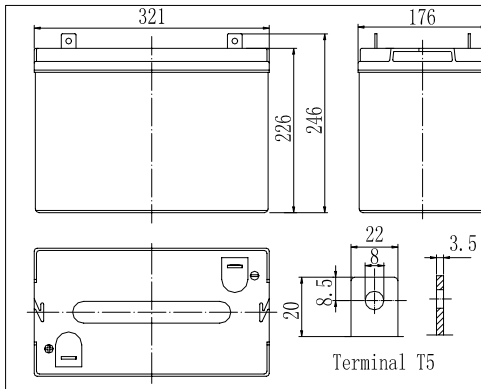


**Dimensions**



**Specifications**

Nominal Voltage		6 V
Capacity(10HR, 25°C)		200 Ah
Dimension	Length	321mm (12.64inch)
	Width	176mm (6.93inch)
	Height	226mm (8.90inch)
	Total Height	246mm (9.69inch)
Approx. Weight		32kg (70.6lbs)
Internal resistance (Fully charged, 25°C)		Approx. 3.1m Ω
Capacity affected by temperature (10HR)	65°C	108%
	55°C	105%
	25°C	100%
	0°C	85%
	-15°C	65%
Self-discharge (25°C)	3 month	Remaining Capacity: 91%
	6 month	Remaining Capacity: 82%
	12 month	Remaining Capacity: 65%
Nominal operating temperature		25°C ± 3°C (77°F ± 5°F)
Operating temperature range		-15°C ~ 70°C (5°F ~ 158°F)
Float charging voltage(25°C)		6.75 to 6.90V
Cyclic charging voltage(25°C)		7.25 to 7.45V
Maximum charging current		60A
Terminal material		Copper
Maximum discharge current		1600A(5 sec.)

- ◆ Absorbent glass mat technology;
- ◆ Recognized by UL & CE;
- ◆ ABS container.

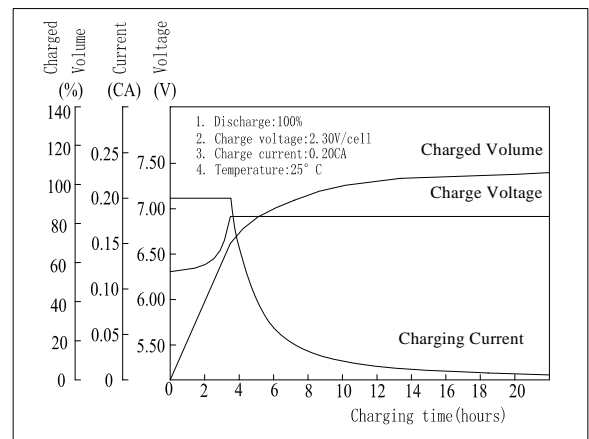
**Constant Current Discharge Characteristics (A, 25°C)**

F.V/TIME	5min	10min	15min	30min	60min	3h	5h	10h	20h
4.80V	631	417	359	204	130	55.0	38.2	20.3	10.6
5.10V	599	396	345	196	122	53.5	37.0	20.1	10.5
5.40V	563	372	327	186	110	50.0	33.5	20.0	10.4

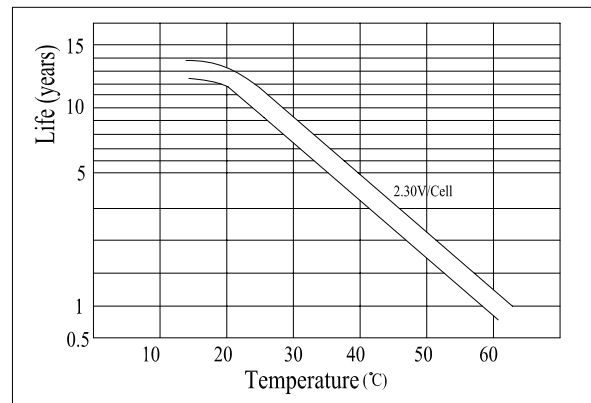
**Constant Power Discharge Characteristics (Watt, 25°C)**

F.V/TIME	5min	10min	15min	30min	60min	3h	5h	10h	20h
4.80V	3310	2252	1970	1143	754	328	229	121	63.3
5.10V	3145	2140	1892	1097	708	319	221	120	62.8
5.40V	2956	2011	1797	1042	638	298	200	120	62.4

**Charging Characteristics(25°C)**



**Temperature Affects On Floating Life**



Note: Floating life at 20°C designed for 10 to 12 years.