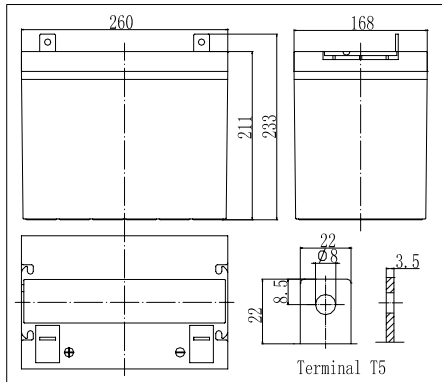


Dimensions



Specifications

| | | |
|---|--------------|----------------------------|
| Nominal Voltage | | 12 V |
| Capacity(10HR, 25°C) | | 80Ah |
| Dimension | Length | 260mm (10.24inch) |
| | Width | 168mm (6.61inch) |
| | Height | 211mm (8.31inch) |
| | Total Height | 233mm (9.17inch) |
| Approx. Weight | | 25.5kg (56.2lbs) |
| Internal resistance (Fully charged, 25°C) | | Approx.5.4m Ω |
| Capacity affected by temperature (10HR) | 65°C | 108% |
| | 55°C | 105% |
| | 25°C | 100% |
| | 0°C | 85% |
| | -15°C | 65% |
| Self-discharge (25°C) | 3 month | Remaining Capacity: 91% |
| | 6 month | Remaining Capacity: 82% |
| | 12 month | Remaining Capacity: 65% |
| Nominal operating temperature | | 25°C ± 3°C (77°F ± 5°F) |
| Operating temperature range | | -15°C ~ 70°C (5°F ~ 158°F) |
| Float charging voltage(25°C) | | 13.50 to 13.80V |
| Cyclic charging voltage(25°C) | | 14.50 to 14.90V |
| Maximum charging current | | 24A |
| Terminal material | | Copper |
| Maximum discharge current | | 800A(5 sec.) |

- ◆ Absorbent glass mat technology;
- ◆ Recognized by UL & CE;
- ◆ ABS container.

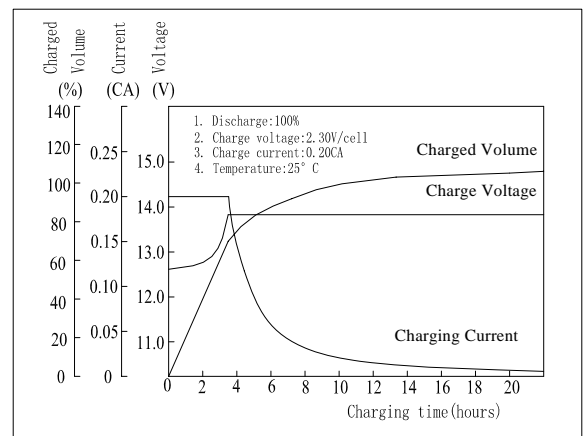
Constant Current Discharge Characteristics (A, 25°C)

| F.V/TIME | 5min | 10min | 15min | 30min | 60min | 3h | 5h | 10h | 20h |
|----------|------|-------|-------|-------|-------|------|------|------|------|
| 9.60V | 248 | 170 | 132 | 82.3 | 52.0 | 20.3 | 14.6 | 8.12 | 4.26 |
| 10.2V | 236 | 161 | 127 | 79.0 | 49.9 | 20.0 | 14.4 | 8.08 | 4.23 |
| 10.8V | 222 | 152 | 121 | 75.1 | 49.6 | 19.6 | 14.1 | 8.00 | 4.20 |

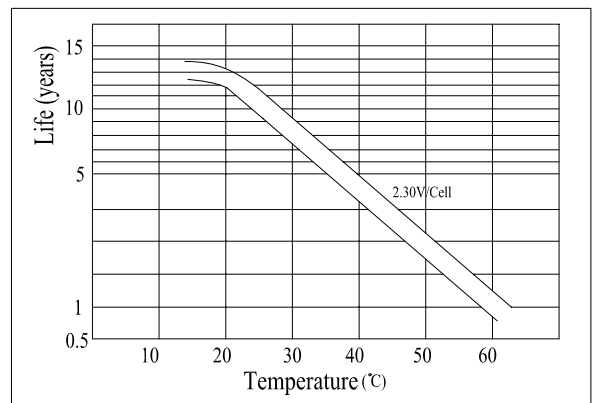
Constant Power Discharge Characteristics (Watt, 25°C)

| F.V/TIME | 5min | 10min | 15min | 30min | 60min | 3h | 5h | 10h | 20h |
|----------|------|-------|-------|-------|-------|-----|-----|------|------|
| 9.60V | 2607 | 1833 | 1453 | 924 | 593 | 239 | 173 | 97.0 | 51.1 |
| 10.2V | 2477 | 1742 | 1395 | 887 | 569 | 235 | 170 | 96.5 | 50.8 |
| 10.8V | 2328 | 1637 | 1325 | 842 | 541 | 230 | 167 | 95.5 | 50.4 |

Charging Characteristics(25°C)



Temperature Affects On Floating Life



Note: Floating life at 20°C designed for 10 to 12 years.