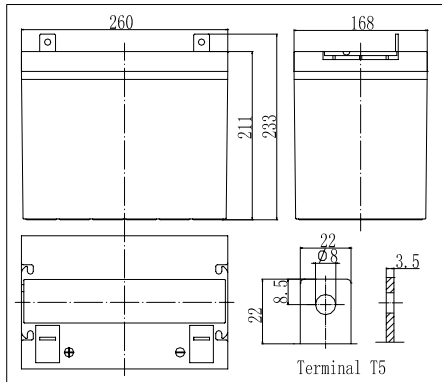


Dimensions



Specifications

Nominal Voltage		12 V
Capacity(10HR, 25°C)		60Ah
Dimension	Length	260mm (10.24inch)
	Width	168mm (6.61inch)
	Height	211mm (8.31inch)
	Total Height	233mm (9.17inch)
Approx. Weight		20.5kg (45.2lbs)
Internal resistance (Fully charged, 25°C)		Approx.5.7m Ω
Capacity affected by temperature (10HR)	65°C	108%
	55°C	105%
	25°C	100%
	0°C	85%
	-15°C	65%
Self-discharge (25°C)	3 month	Remaining Capacity: 91%
	6 month	Remaining Capacity: 82%
	12 month	Remaining Capacity: 65%
Nominal operating temperature		25°C ± 3°C (77°F ± 5°F)
Operating temperature range		-15°C ~ 70°C (5°F ~ 158°F)
Float charging voltage(25°C)		13.50 to 13.80V
Cyclic charging voltage(25°C)		14.50 to 14.90V
Maximum charging current		18A
Terminal material		Copper
Maximum discharge current		600A(5 sec.)

- ◆ Absorbent glass mat technology;
- ◆ Recognized by UL & CE;
- ◆ ABS container.

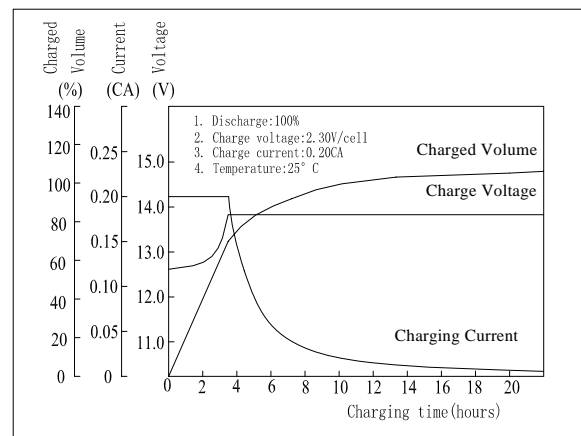
Constant Current Discharge Characteristics (A, 25°C)

F.V/TIME	5min	10min	15min	30min	60min	3h	5h	10h	20h
9.60V	183	122	97.0	61.2	37.8	15.5	11.0	6.09	3.20
10.2V	174	116	93.1	58.7	36.3	15.3	10.8	6.04	3.17
10.8V	164	109	88.5	55.8	34.5	15.0	10.6	6.00	3.15

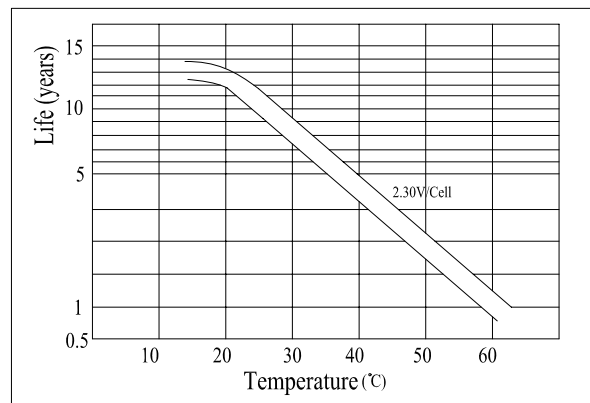
Constant Power Discharge Characteristics (Watt, 25°C)

F.V/TIME	5min	10min	15min	30min	60min	3h	5h	10h	20h
9.60V	1925	1320	1065	686	431	183	130	72.7	38.4
10.2V	1829	1254	1023	659	414	180	128	72.1	38.0
10.8V	1719	1179	972	626	393	176	125	72.1	37.8

Charging Characteristics(25°C)



Temperature Affects On Floating Life



Note: Floating life at 20°C designed for 10 to 12 years.