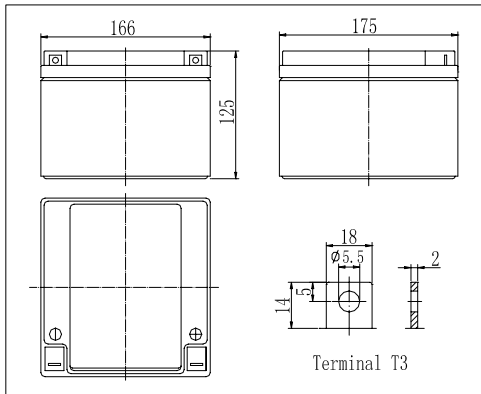


Dimensions



Specifications

Nominal Voltage		12 V
Capacity(20HR, 25°C)		24Ah
Dimension	Length	166mm (6.54inch)
	Width	175mm (6.89inch)
	Height	125mm (4.92inch)
	Total Height	125mm (4.92inch)
Approx. Weight		8.30kg (18.3lbs)
Internal resistance (Fully charged, 25°C)		Approx. 12mΩ
Capacity affected by temperature (20HR)	65°C	108%
	55°C	105%
	25°C	100%
	0°C	85%
	-15°C	65%
Self-discharge (25°C)	3 month	Remaining Capacity: 91%
	6 month	Remaining Capacity: 82%
	12 month	Remaining Capacity: 65%
Nominal operating temperature		25°C ± 3°C (77°F ± 5°F)
Operating temperature range		-15°C ~ 70°C (5°F ~ 158°F)
Float charging voltage(25°C)		13.60 to 13.80V
Cyclic charging voltage(25°C)		14.50 to 14.90V
Maximum charging current		7.2A
Terminal material		Copper
Maximum discharge current		360A(5 sec.)

- ◆ Absorbent glass mat technology;
- ◆ Recognized by UL & CE;
- ◆ ABS container.

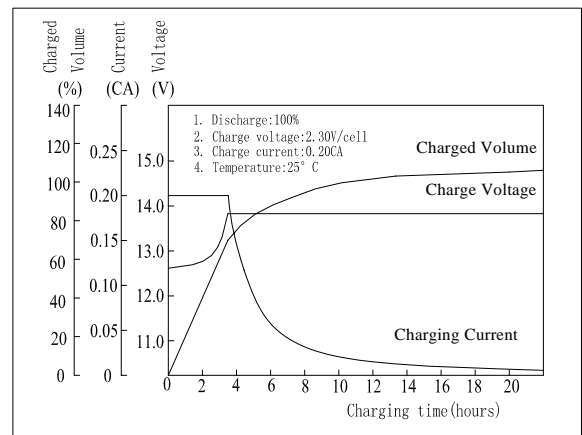
Constant Current Discharge Characteristics (A, 25°C)

F.V/TIME	5min	10min	15min	30min	60min	3h	5h	10h	20h
9.60V	88.5	55.9	44.7	25.9	15.6	6.09	4.14	2.24	1.22
10.2V	84.0	53.1	42.9	24.8	15.0	6.00	4.08	2.22	1.21
10.8V	79.0	49.9	40.8	23.6	14.2	5.88	4.00	2.21	1.20

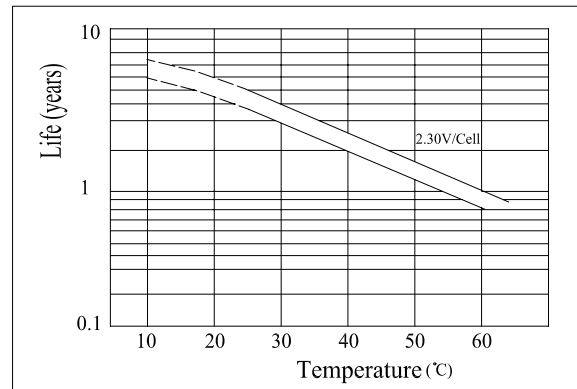
Constant Power Discharge Characteristics (Watt, 25°C)

F.V/TIME	5min	10min	15min	30min	60min	3h	5h	10h	20h
9.60V	987	630	509	296	181	72.3	49.4	26.9	14.6
10.2V	938	599	489	285	173	71.3	48.7	26.7	14.5
10.8V	882	563	465	270	165	69.9	47.7	26.7	14.4

Charging Characteristics(25°C)



Temperature Affects On Floating Life



Note: Floating life at 20°C designed for 4 to 5 years.