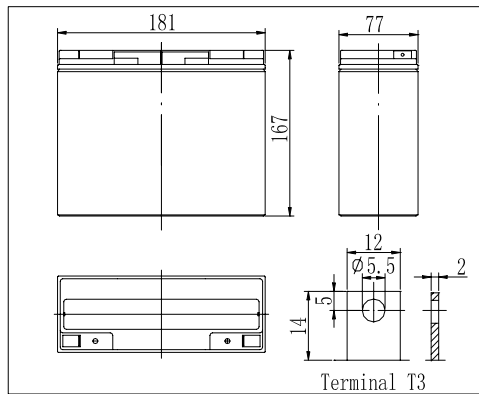


**Dimensions**



**Specifications**

Nominal Voltage		12 V
Capacity(20HR, 25°C)		18Ah
Dimension	Length	181mm (7.13inch)
	Width	77mm (3.03inch)
	Height	167mm (6.57inch)
	Total Height	167mm (6.57inch)
Approx. Weight		5.6kg (12.4lbs)
Internal resistance (Fully charged, 25°C)		Approx. 17mΩ
Capacity affected by temperature (20HR)	65°C	108%
	55°C	105%
	25°C	100%
	0°C	85%
	-15°C	65%
Self-discharge (25°C)	3 month	Remaining Capacity: 91%
	6 month	Remaining Capacity: 82%
	12 month	Remaining Capacity: 65%
Nominal operating temperature		25°C ± 3°C (77°F ± 5°F)
Operating temperature range		-15°C ~ 70°C (5°F ~ 158°F)
Float charging voltage(25°C)		13.60 to 13.80V
Cyclic charging voltage(25°C)		14.50 to 14.90V
Maximum charging current		5.4A
Terminal material		Copper
Maximum discharge current		270A(5 sec.)

- ◆ Absorbent glass mat technology;
- ◆ Recognized by UL & CE;
- ◆ ABS container.

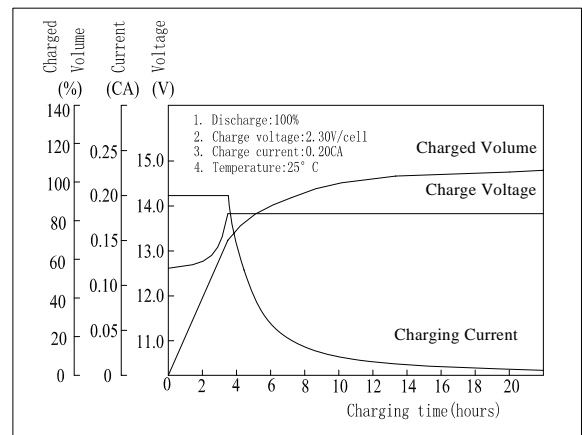
**Constant Current Discharge Characteristics (A, 25°C)**

F.V/TIME	5min	10min	15min	30min	60min	3h	5h	10h	20h
9.60V	66.3	41.9	33.5	19.4	11.7	4.57	3.11	1.68	0.91
10.2V	63.0	39.8	32.2	18.6	11.2	4.50	3.06	1.67	0.91
10.8V	59.2	37.4	30.6	17.7	10.7	4.41	3.00	1.66	0.90

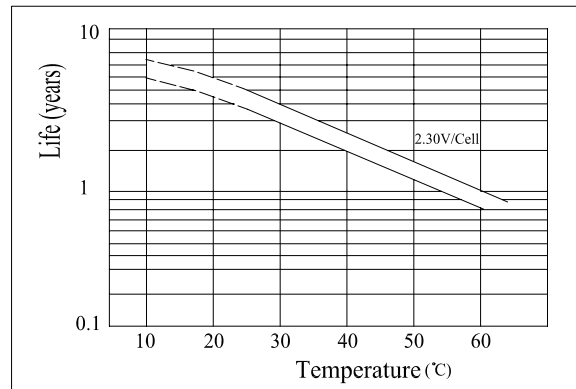
**Constant Power Discharge Characteristics (Watt, 25°C)**

F.V/TIME	5min	10min	15min	30min	60min	3h	5h	10h	20h
9.60V	740	473	382	222	135	54.3	37.1	20.2	11.0
10.2V	703	449	367	213	130	53.5	36.5	20.0	10.9
10.8V	661	422	348	203	124	52.4	35.8	20.0	10.8

**Charging Characteristics(25°C)**



**Temperature Affects On Floating Life**



Note: Floating life at 20°C designed for 4 to 5 years.