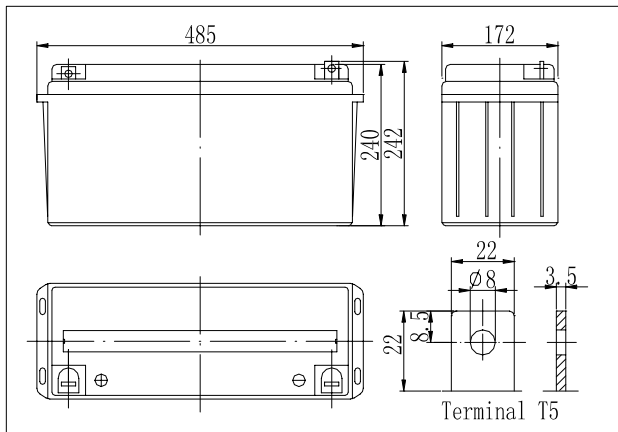


**Dimensions**



**Specifications**

Nominal Voltage		12 V
Capacity(10HR, 25°C)		150 Ah
Dimension	Length	485mm (19.09inch)
	Width	172mm (6.77inch)
	Height	240mm (9.45inch)
	Total Height	242mm (9.53inch)
Approx. Weight		48kg (105.8lbs)
Internal resistance (Fully charged, 25°C)		Approx. 3.7mΩ
Capacity affected by temperature (10HR)	65°C	108%
	55°C	105%
	25°C	100%
	0°C	85%
	-15°C	65%
Self-discharge (25°C)	3 month	Remaining Capacity: 91%
	6 month	Remaining Capacity: 82%
	12 month	Remaining Capacity: 65%
Nominal operating temperature		25°C ± 3°C (77°F ± 5°F)
Operating temperature range		-15°C ~ 70°C (5°F ~ 158°F)
Float charging voltage(25°C)		13.50 to 13.80V
Cyclic charging voltage(25°C)		14.50 to 14.90V
Maximum charging current		45A
Terminal material		Copper
Maximum discharge current		1200A(5 sec.)

- ◆ Absorbent glass mat technology;
- ◆ Recognized by UL & CE;
- ◆ ABS container.

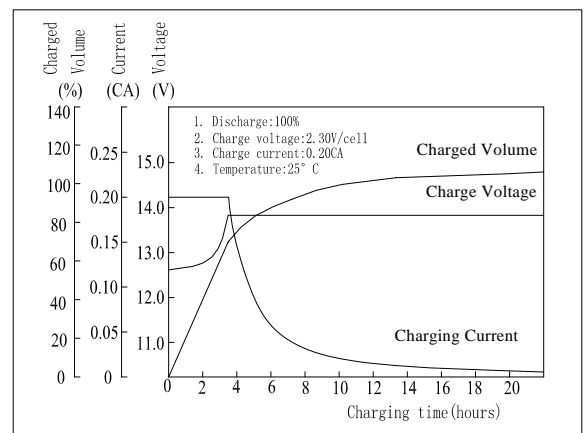
**Constant Current Discharge Characteristics (A, 25°C)**

F.V/TIME	5min	10min	15min	30min	60min	3h	5h	10h	20h
9.60V	437	320	262	155	97.5	39.6	27.6	15.3	7.90
10.2V	415	304	251	149	93.6	39.0	27.2	15.2	7.90
10.8V	390	286	239	142	88.9	38.2	26.7	15.0	7.80

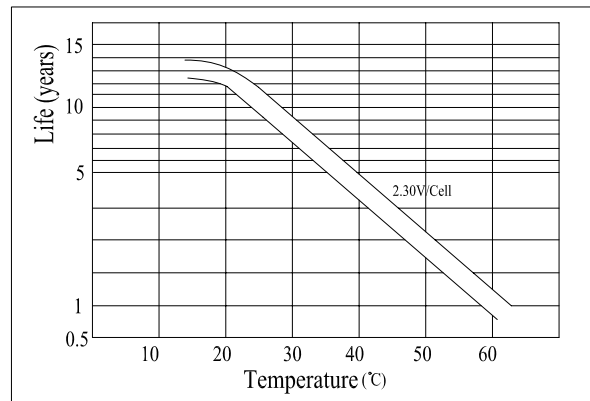
**Constant Power Discharge Characteristics (Watt, 25°C)**

F.V/TIME	5min	10min	15min	30min	60min	3h	5h	10h	20h
9.60V	4583	3457	2876	1741	1112	466	326	183	94.8
10.2V	4354	3284	2761	1672	1067	459	322	181	94.8
10.8V	4093	3087	2623	1588	1013	450	316	179	93.6

**Charging Characteristics(25°C)**



**Temperature Affects On Floating Life**



Note: Floating life at 20°C designed for 10 to 12 years.

