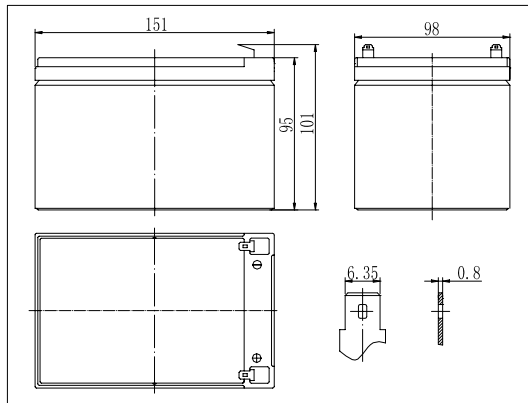


Dimensions



Specifications

Nominal Voltage		12 V
Capacity(20HR, 25°C)		12 Ah
Dimension	Length	151mm (5.94inch)
	Width	98mm (3.86inch)
	Height	95mm (3.74inch)
	Total Height	101mm (3.98inch)
Approx. Weight		3.8kg (8.38lbs)
Internal resistance (Fully charged, 25°C)		Approx. 17mΩ
Capacity affected by temperature (20HR)	65°C	108%
	55°C	105%
	25°C	100%
	0°C	85%
	-15°C	65%
Self-discharge (25°C)	3 month	Remaining Capacity: 91%
	6 month	Remaining Capacity: 82%
	12 month	Remaining Capacity: 65%
Nominal operating temperature		25°C ± 3°C (77°F ± 5°F)
Operating temperature range		-15°C ~ 70°C (5°F ~ 158°F)
Float charging voltage(25°C)		13.60 to 13.80V
Cyclic charging voltage(25°C)		14.50 to 14.90V
Maximum charging current		3.6A
Terminal material		Copper
Maximum discharge current		180A(5 sec.)

- ◆ Absorbent glass mat technology;
- ◆ Recognized by UL & CE;
- ◆ ABS container.

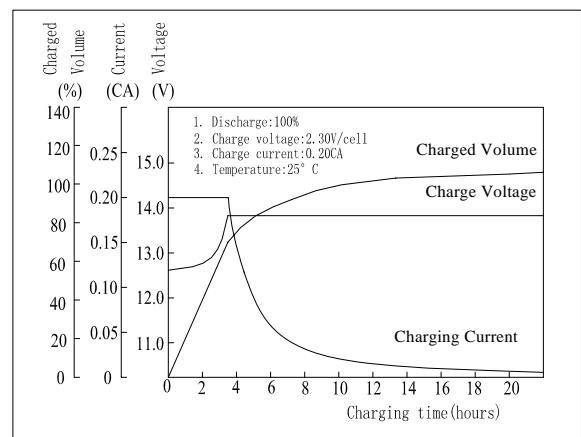
Constant Current Discharge Characteristics (A, 25°C)

F.V/TIME	5min	10min	15min	30min	60min	3h	5h	10h	20h
9.60V	44.6	30.1	24.0	13.2	7.80	3.17	2.08	1.12	0.60
10.2V	42.4	28.6	23.0	12.7	7.49	3.12	2.05	1.11	0.59
10.8V	39.8	26.9	21.9	12.1	7.11	3.06	2.01	1.10	0.59

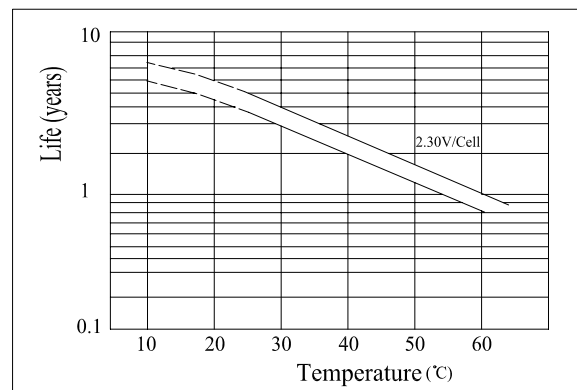
Constant Power Discharge Characteristics (Watt, 25°C)

F.V/TIME	5min	10min	15min	30min	60min	3h	5h	10h	20h
9.60V	498	339	274	152	90.3	37.6	25.0	13.4	7.20
10.2V	473	322	263	146	86.7	37.1	24.5	13.3	7.10
10.8V	445	303	250	138	82.4	36.3	24.0	13.3	7.10

Charging Characteristics(25°C)



Temperature Affects On Floating Life



Note: Floating life at 20°C designed for 4 to 5 years.