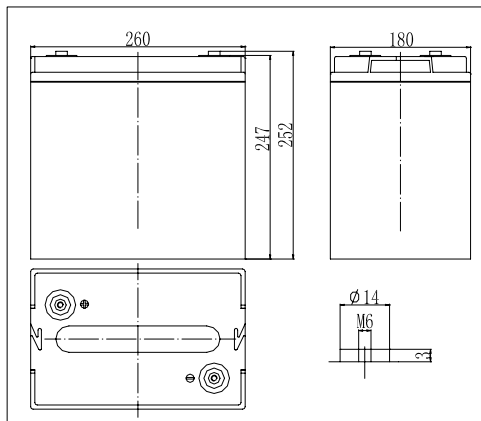


Dimensions**Specifications**

| | | |
|---|--------------|----------------------------|
| Nominal Voltage | | 6 V |
| Capacity(10HR, 25°C) | | 150 Ah |
| Dimension | Length | 260mm (10.4inch) |
| | Width | 180mm (7.20inch) |
| | Height | 247mm (9.88inch) |
| | Total Height | 252mm (10.1inch) |
| Approx. Weight | | 24.5kg (54.0lbs) |
| Internal resistance (Fully charged, 25°C) | | Approx. 3.3m Ω |
| Capacity affected by temperature (10HR) | 40°C | 102% |
| | 25°C | 100% |
| | 0°C | 85% |
| | -15°C | 65% |
| Self-discharge (25°C) | 3 month | Remaining Capacity: 91% |
| | 6 month | Remaining Capacity: 82% |
| | 12 month | Remaining Capacity: 65% |
| Nominal operating temperature | | 25°C ± 3°C (77°F ± 5°F) |
| Operating temperature range | | -15°C ~ 50°C (5°F ~ 122°F) |
| Float charging voltage(25°C) | | 6.75 to 6.90V |
| Cyclic charging voltage(25°C) | | 7.25 to 7.45V |
| Maximum charging current | | 45A |
| Terminal material | | Copper |
| Maximum discharge current | | 1200A(5 sec.) |

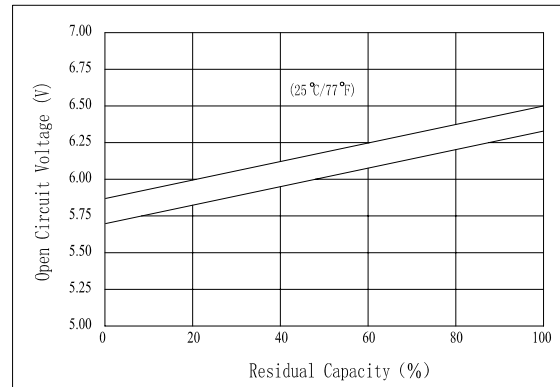
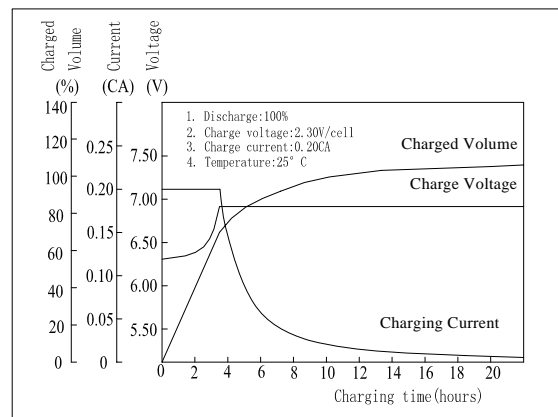
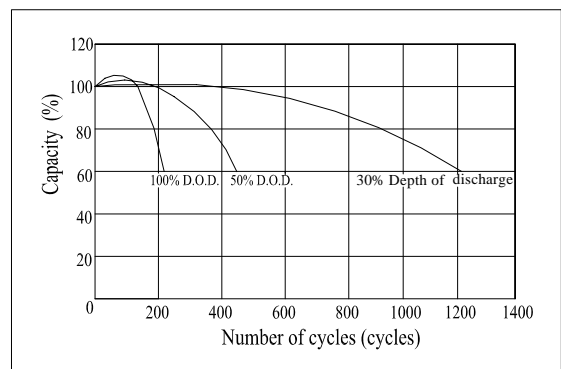
- ◆ Absorbent glass mat technology;
- ◆ Recognized by UL & CE;
- ◆ ABS container.

Constant Current Discharge Characteristics (A, 25°C)

| F.V/TIME | 5min | 10min | 15min | 30min | 60min | 3h | 5h | 10h | 20h |
|----------|------|-------|-------|-------|-------|------|------|------|------|
| 4.80V | 473 | 315 | 248 | 156 | 94.5 | 38.8 | 27.4 | 15.2 | 7.99 |
| 5.10V | 449 | 299 | 238 | 150 | 90.7 | 38.3 | 27.0 | 15.1 | 7.92 |
| 5.40V | 422 | 281 | 226 | 142 | 86.2 | 37.5 | 26.5 | 15.0 | 7.88 |

Constant Power Discharge Characteristics (Watt, 25°C)

| F.V/TIME | 5min | 10min | 15min | 30min | 60min | 3h | 5h | 10h | 20h |
|----------|------|-------|-------|-------|-------|-----|-----|------|------|
| 4.80V | 2481 | 1701 | 1359 | 875 | 539 | 228 | 162 | 90.9 | 48.0 |
| 5.10V | 2357 | 1616 | 1304 | 840 | 517 | 225 | 160 | 90.1 | 47.5 |
| 5.40V | 2215 | 1519 | 1239 | 798 | 491 | 220 | 156 | 90.1 | 47.3 |

The Relationship for Open Circuit Voltage and Residual Capacity (25°C)**Charging Characteristics(25°C)****Cycle Life(25°C)**

Note: Floating life at 20°C designed for 7 to 10 years.