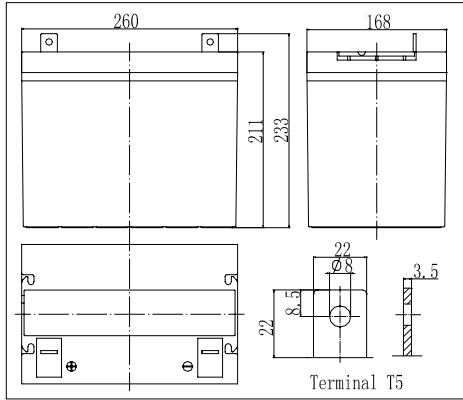


Dimensions



Specifications

Nominal Voltage	12 V	
Capacity(10HR, 25°C)	85Ah	
Dimension	Length	260mm (10.24inch)
	Width	168mm (6.61inch)
	Height	211mm (8.31inch)
	Total Height	233mm (9.17inch)
Approx. Weight	26.5kg (58.4lbs)	
Internal resistance (Fully charged, 25°C)	Approx.5.3mΩ	
Capacity affected by temperature (10HR)	40°C	102%
	25°C	100%
	0°C	85%
	-15°C	65%
Self-discharge (25°C)	3 month	Remaining Capacity: 91%
	6 month	Remaining Capacity: 82%
	12 month	Remaining Capacity: 65%
Nominal operating temperature	25°C ± 3°C (77°F ± 5°F)	
Operating temperature range	-15°C ~ 50°C (5°F ~ 122°F)	
Float charging voltage(25°C)	13.50 to 13.80V	
Cyclic charging voltage(25°C)	14.50 to 14.90V	
Maximum charging current	25.5A	
Terminal material	Copper	
Maximum discharge current	800A(5 sec.)	

- ◆ Absorbent glass mat technology;
- ◆ Recognized by UL & CE;
- ◆ ABS container.

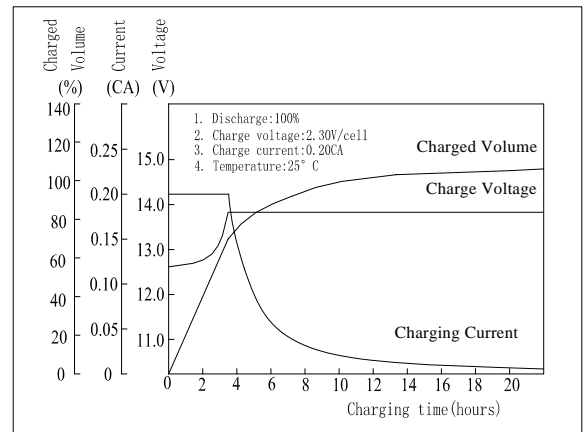
Constant Current Discharge Characteristics (A, 25°C)

F.V/TIME	5min	10min	15min	30min	60min	3h	5h	10h	20h
9.60V	270	185	145	90.0	55.0	21.6	15.5	8.63	4.49
10.2V	257	176	139	86.4	52.8	21.3	15.3	8.55	4.45
10.8V	241	165	132	82.1	50.2	20.9	15.0	8.50	4.42

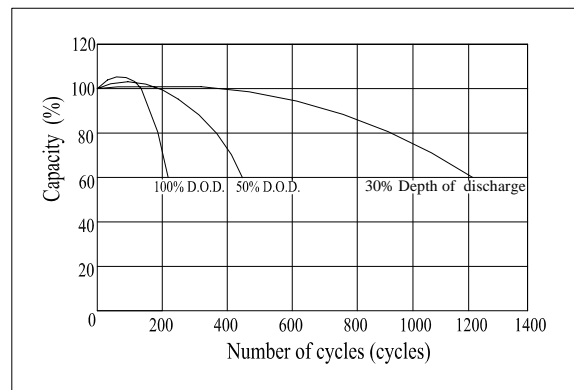
Constant Power Discharge Characteristics (Watt, 25°C)

F.V/TIME	5min	10min	15min	30min	60min	3h	5h	10h	20h
9.60V	2835	1998	1592	1010	627	254	184	103	53.8
10.2V	2693	1898	1528	969	602	250	181	102	53.4
10.8V	2532	1784	1452	921	572	245	177	102	53.0

Charging Characteristics(25°C)



Cycle Life(25°C)



Note: Floating life at 20°C designed for 7 to 10 years.