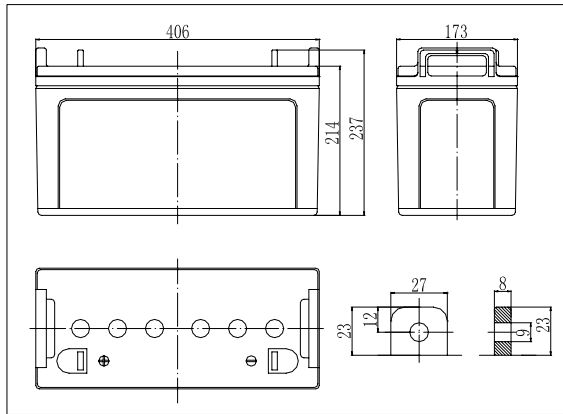


**Dimensions**



**Specifications**

Nominal Voltage	12 V	
Capacity(10HR, 25°C)	100 Ah	
Dimension	Length	406mm (15.98inch)
	Width	173mm (6.81inch)
	Height	214mm (8.43inch)
	Total Height	243mm (9.57inch)
Approx. Weight	31.5kg (69.5lbs)	
Internal resistance (Fully charged, 25°C)	Approx.4.5m Ω	
Capacity affected by temperature (10HR)	40°C	102%
	25°C	100%
	0°C	85%
	-15°C	65%
Self-discharge (25°C)	3 month	Remaining Capacity: 91%
	6 month	Remaining Capacity: 82%
	12 month	Remaining Capacity: 65%
Nominal operating temperature	25°C ± 3°C (77°F ± 5°F)	
Operating temperature range	-15°C ~ 50°C (5°F ~ 122°F )	
Float charging voltage(25°C)	13.50 to 13.80V	
Cyclic charging voltage(25°C)	14.50 to 14.90V	
Maximum charging current	30A	
Terminal material	Lead	
Maximum discharge current	800A(5 sec.)	

- ◆ Absorbent glass mat technology;
- ◆ Recognized by UL & CE;
- ◆ ABS container.

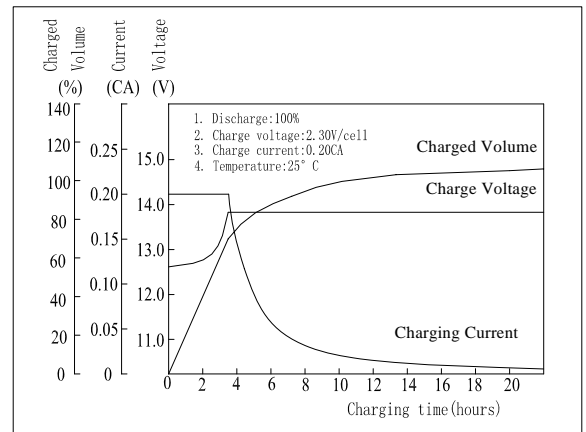
**Constant Current Discharge Characteristics (A, 25°C)**

F.V/TIME	5min	10min	15min	30min	60min	3h	5h	10h	20h
9.60V	300	205	160	105	63.0	25.4	18.3	10.2	5.28
10.2V	285	195	154	101	60.5	25.0	18.0	10.1	5.23
10.8V	268	183	146	96.0	57.5	24.5	17.6	10.0	5.20

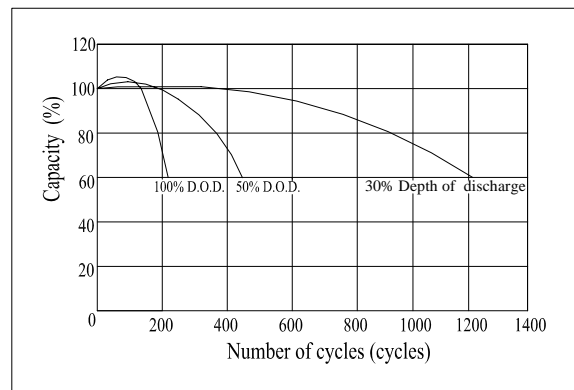
**Constant Power Discharge Characteristics (Watt, 25°C)**

F.V/TIME	5min	10min	15min	30min	60min	3h	5h	10h	20h
9.60V	3150	2214	1757	1178	718	298	216	121	63.3
10.2V	2993	2103	1687	1131	689	294	213	120	62.8
10.8V	2813	1977	1602	1074	655	288	209	120	62.4

**Charging Characteristics(25°C)**



**Cycle Life(25°C)**



Note: Floating life at 20°C designed for 7 to 10 years.