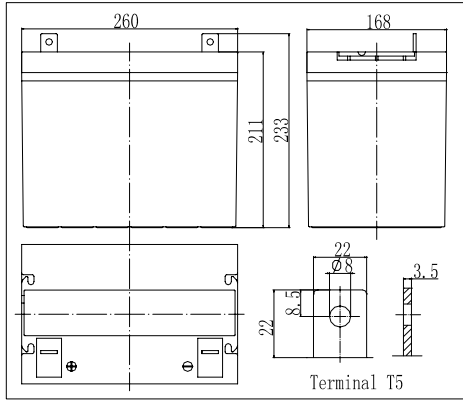
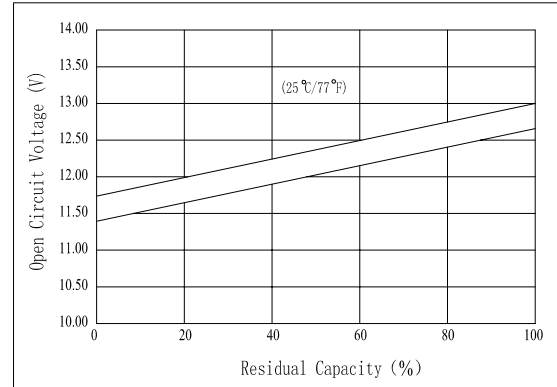


**Dimensions**



**The Relationship for Open Circuit Voltage and Residual Capacity (25°C)**

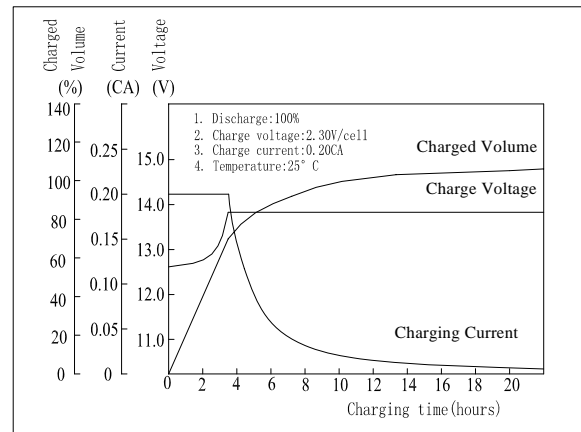


**Specifications**

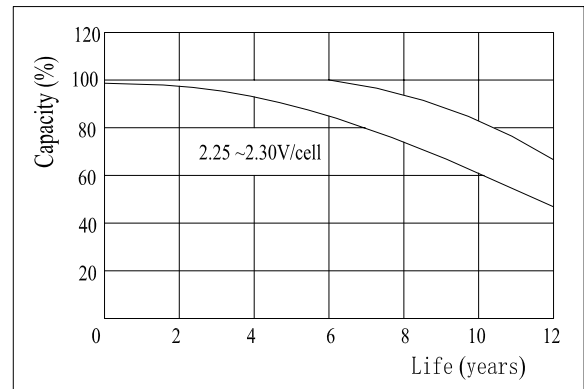
Nominal Voltage	12 V	
Capacity(10HR, 25°C)	70Ah	
Dimension	Length	260mm (10.24inch)
	Width	168mm (6.61inch)
	Height	211mm (8.31inch)
	Total Height	233mm (9.17inch)
Approx. Weight	24kg (45.2lbs)	
Internal resistance (Fully charged, 25°C)	Approx.5.5mΩ	
Capacity affected by temperature (10HR)	40°C	102%
	25°C	100%
	0°C	85%
	-15°C	65%
Self-discharge (25°C)	3 month	Remaining Capacity: 91%
	6 month	Remaining Capacity: 82%
	12 month	Remaining Capacity: 65%
Nominal operating temperature	25°C ± 3°C (77°F ± 5°F)	
Operating temperature range	-15°C ~ 50°C (5°F ~ 122°F)	
Float charging voltage(25°C)	13.50 to 13.80V	
Cyclic charging voltage(25°C)	14.50 to 14.90V	
Maximum charging current	21A	
Terminal material	Copper	
Maximum discharge current	700A(5 sec.)	

- ◆ Absorbent glass mat technology;
- ◆ Recognized by UL & CE;
- ◆ ABS container.

**Charging Characteristics(25°C)**



**Floating Life Characteristics (25°C)**



Note: Floating life at 20°C designed for more than 12 years.

**Constant Current Discharge Characteristics (A, 25°C)**

F.V/TIME	5min	10min	15min	30min	60min	3h	5h	10h	20h
9.60V	214	143	113	71.3	44.1	18.1	12.8	7.11	3.73
10.2V	203	135	109	68.5	42.3	17.9	12.6	7.04	3.70
10.8V	191	127	103	65.1	40.2	17.5	12.3	7.00	3.68

**Constant Power Discharge Characteristics (Watt, 25°C)**

F.V/TIME	5min	10min	15min	30min	60min	3h	5h	10h	20h
9.60V	2246	1540	1243	800	503	213	151	84.8	44.8
10.2V	2134	1463	1193	768	483	210	149	84.1	44.4
10.8V	2005	1375	1133	730	458	206	146	84.1	44.1