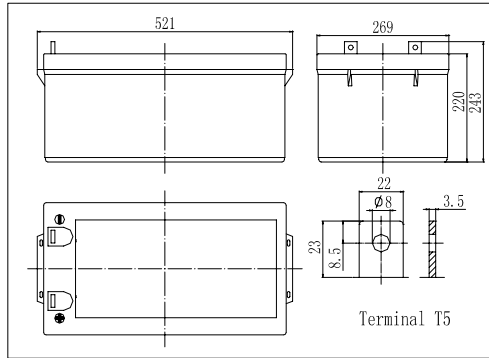
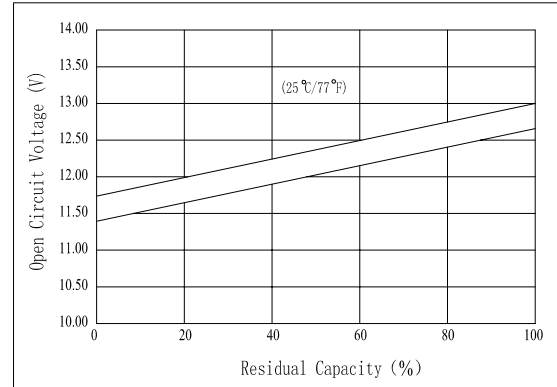


**Dimensions**



**The Relationship for Open Circuit Voltage and Residual Capacity (25°C)**

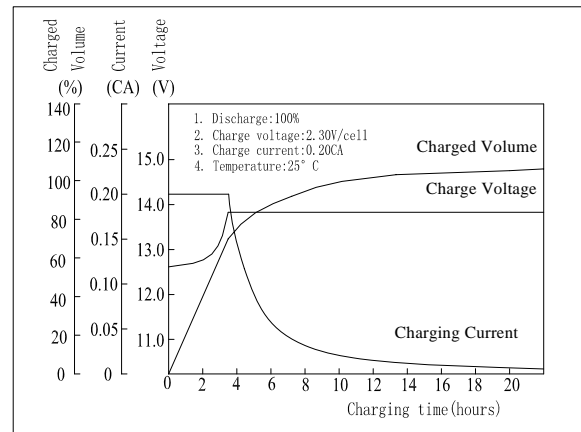


**Specifications**

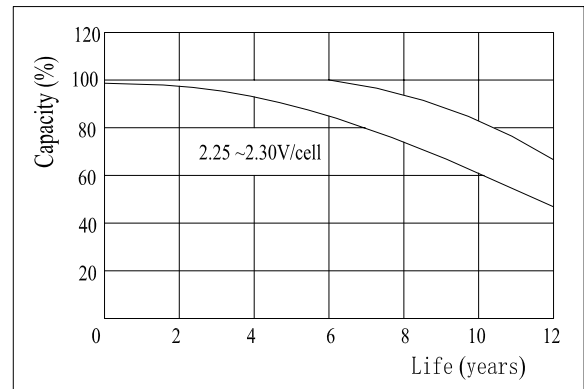
Nominal Voltage		12 V
Capacity(10HR, 25°C)		250 Ah
Dimension	Length	521mm (20.5inch)
	Width	269mm (10.6inch)
	Height	220mm (8.66inch)
	Total Height	242mm (9.53inch)
Approx. Weight		78kg (172lbs)
Internal resistance (Fully charged, 25°C)		Approx. 2.8m Ω
Capacity affected by temperature (10HR)	40°C	102%
	25°C	100%
	0°C	85%
	-15°C	65%
Self-discharge (25°C)	3 month	Remaining Capacity: 91%
	6 month	Remaining Capacity: 82%
	12 month	Remaining Capacity: 65%
Nominal operating temperature		25°C ± 3°C (77°F ± 5°F)
Operating temperature range		-15°C ~ 50°C (5°F ~ 122°F)
Float charging voltage(25°C)		13.50 to 13.80V
Cyclic charging voltage(25°C)		14.50 to 14.90V
Maximum charging current		75A
Terminal material		Copper
Maximum discharge current		1800A(5 sec.)

- ◆ Absorbent glass mat technology;
- ◆ Recognized by UL & CE;
- ◆ ABS container.

**Charging Characteristics(25°C)**



**Floating Life Characteristics (25°C)**



Note: Floating life at 20°C designed for more than 12 years.

**Constant Current Discharge Characteristics (A, 25°C)**

F.V/TIME	5min	10min	15min	30min	60min	3h	5h	10h	20h
9.60V	764	509	404	255	158	64.7	45.7	25.4	13.3
10.2V	726	484	388	245	151	63.8	45.0	25.2	13.2
10.8V	682	455	369	232	144	62.5	44.1	25.0	13.1

**Constant Power Discharge Characteristics (Watt, 25°C)**

F.V/TIME	5min	10min	15min	30min	60min	3h	5h	10h	20h
9.60V	8021	5500	4439	2859	1796	761	540	303	160
10.2V	7620	5225	4261	2745	1724	750	532	300	158
10.8V	7162	4911	4048	2607	1637	735	521	300	158