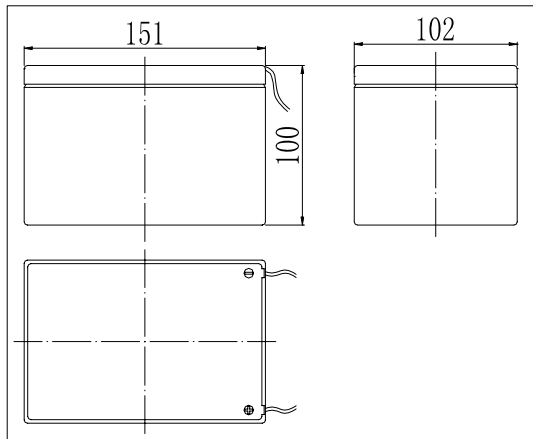
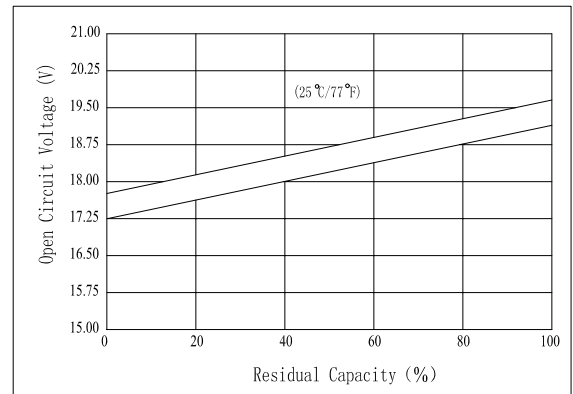


**Dimensions**



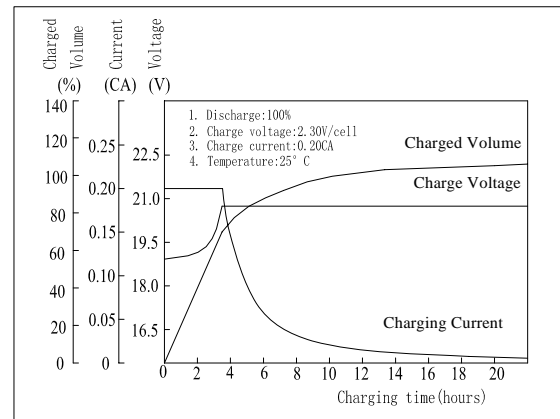
**The Relationship for Open Circuit Voltage and Residual Capacity (25°C)**



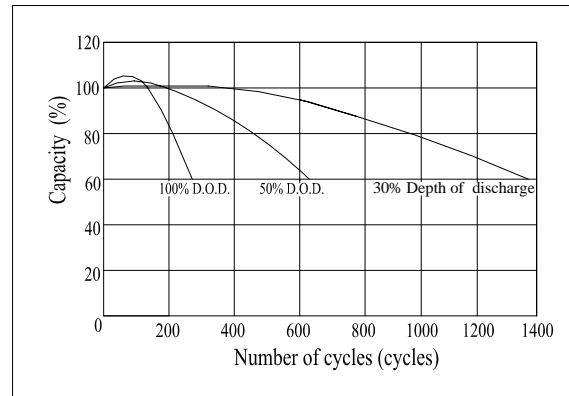
**Specifications**

Nominal Voltage	18 V	
Capacity(20HR, 25°C)	9 Ah	
Dimension	Length	151mm (5.94inch)
	Width	102mm (4.02inch)
	Height	100mm (3.94inch)
	Total Height	100mm (3.94inch)
Approx. Weight	4kg (8.82lbs)	
Internal resistance (Fully charged, 25°C)	Approx. 40mΩ	
Capacity affected by temperature (20HR)	40°C	102%
	25°C	100%
	0°C	85%
	-15°C	65%
Self-discharge (25°C)	3 month	Remaining Capacity: 91%
	6 month	Remaining Capacity: 82%
	12 month	Remaining Capacity: 65%
Nominal operating temperature	25°C ± 3°C (77°F ± 5°F)	
Operating temperature range	-15°C ~ 50°C (5°F ~ 122°F)	
Float charging voltage(25°C)	20.40 to 20.70V	
Cyclic charging voltage(25°C)	21.75 to 22.35V	
Maximum charging current	2.7A	
Terminal material	Plug	
Maximum discharge current	30A(5 sec.)	

**Charging Characteristics(25°C)**



**Cycle Life(25°C)**



Note: Floating life at 20°C designed for 3 to 5 years.

- ◆ Absorbent glass mat technology;
- ◆ Recognized by UL & CE;
- ◆ ABS container

**Constant Current Discharge Characteristics (A, 25°C)**

F.V/TIME	5min	10min	15min	30min	60min	3h	5h	10h	20h
14.4V	--	--	--	11.3	6.17	2.48	1.67	0.94	0.53
15.3V	--	--	--	10.9	5.93	2.44	1.65	0.93	0.51
16.2V	--	--	--	10.3	5.63	2.39	1.61	0.93	0.51

**Constant Power Discharge Characteristics (Watt, 25°C)**

F.V/TIME	5min	10min	15min	30min	60min	3h	5h	10h	20h
14.4V	--	--	--	194	107	44.4	30.0	16.8	9.49
15.3V	--	--	--	186	103	43.6	29.4	16.7	9.39
16.2V	--	--	--	177	97.6	42.8	28.8	16.7	9.39