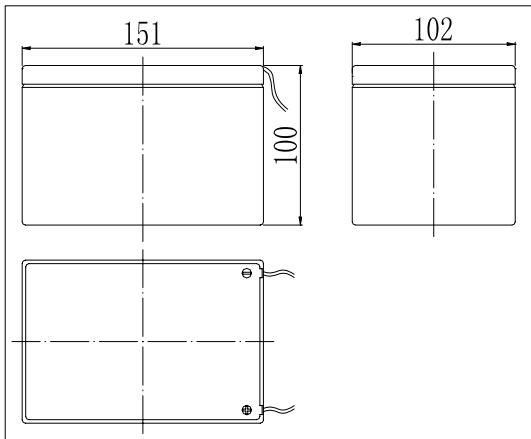
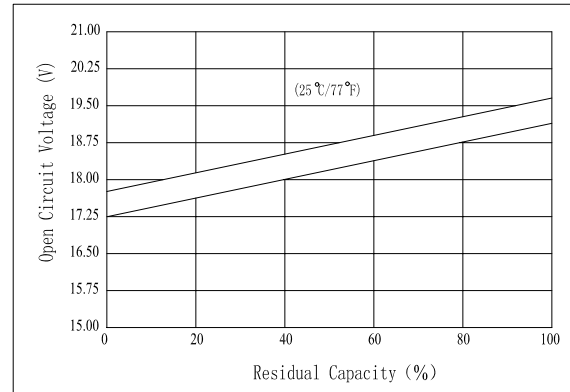


**Dimensions**



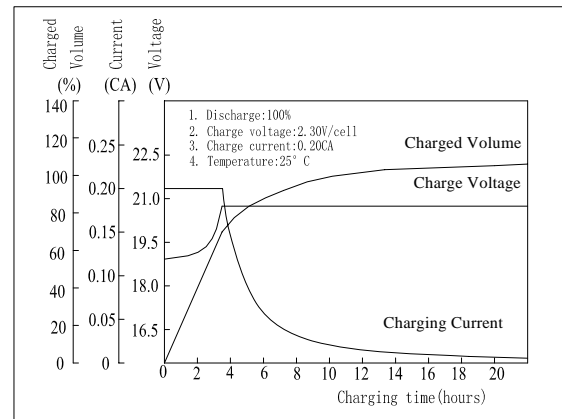
**The Relationship for Open Circuit Voltage and Residual Capacity (25°C)**



**Specifications**

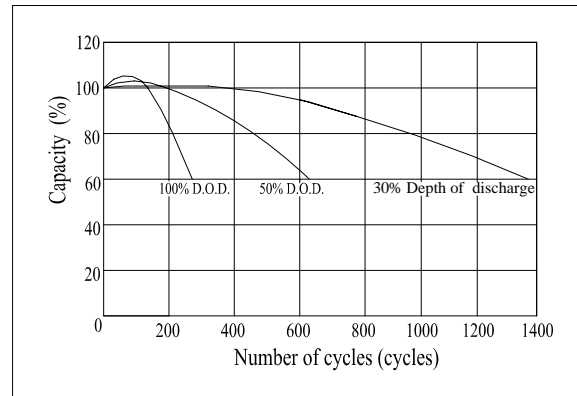
Nominal Voltage	18 V	
Capacity(20HR, 25°C)	7 Ah	
Dimension	Length	151mm (5.94inch)
	Width	102mm (4.02inch)
	Height	100mm (3.94inch)
	Total Height	100mm (3.94inch)
Approx. Weight	3.8kg (8.38lbs)	
Internal resistance (Fully charged, 25°C)	Approx. 42mΩ	
Capacity affected by temperature (20HR)	40°C	102%
	25°C	100%
	0°C	85%
	-15°C	65%
Self-discharge (25°C)	3 month	Remaining Capacity: 91%
	6 month	Remaining Capacity: 82%
	12 month	Remaining Capacity: 65%
Nominal operating temperature	25°C ± 3°C (77°F ± 5°F)	
Operating temperature range	-15°C ~ 50°C (5°F ~ 122°F)	
Float charging voltage(25°C)	20.40 to 20.70V	
Cyclic charging voltage(25°C)	21.75 to 22.35V	
Maximum charging current	2.1A	
Terminal material	Plug	
Maximum discharge current	30A(5 sec.)	

**Charging Characteristics(25°C)**



- ◆ Absorbent glass mat technology;
- ◆ Recognized by UL & CE;
- ◆ ABS container.

**Cycle Life(25°C)**



Note: Floating life at 20°C designed for 3 to 5 years.

**Constant Current Discharge Characteristics (A, 25°C)**

F.V/TIME	5min	10min	15min	30min	60min	3h	5h	10h	20h
14.4V	--	--	--	8.80	4.80	1.93	1.30	0.73	0.41
15.3V	--	--	--	8.45	4.61	1.90	1.28	0.72	0.40
16.2V	--	--	--	8.03	4.38	1.86	1.25	0.72	0.40

**Constant Power Discharge Characteristics (Watt, 25°C)**

F.V/TIME	5min	10min	15min	30min	60min	3h	5h	10h	20h
14.4V	--	--	--	151	83.4	34.5	23.3	13.1	7.38
15.3V	--	--	--	145	80.1	33.9	22.9	13.0	7.30
16.2V	--	--	--	138	75.9	33.3	22.4	13.0	7.30