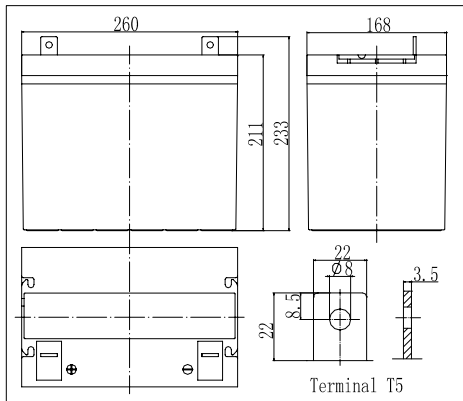


Dimensions

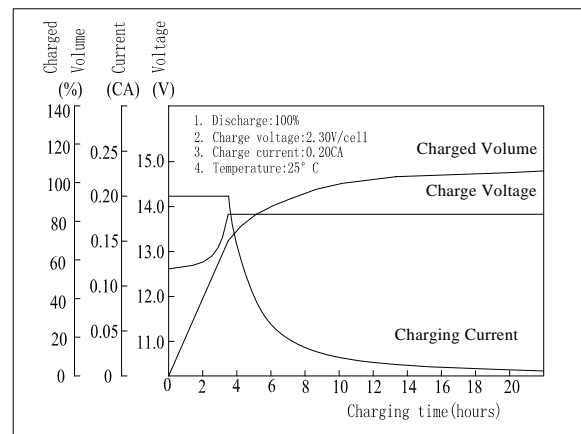


Specifications

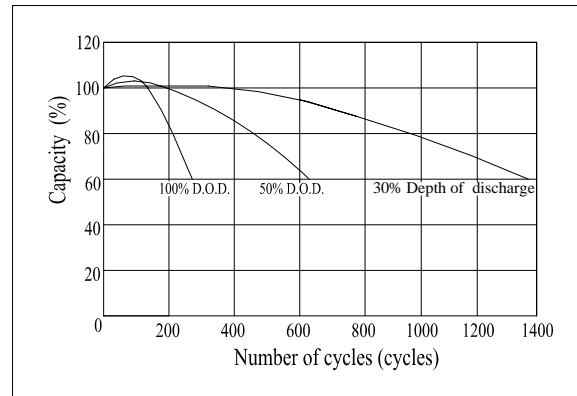
Nominal Voltage	12 V	
Capacity(10HR, 25°C)	80Ah	
Dimension	Length	260mm (10.24inch)
	Width	168mm (6.61inch)
	Height	211mm (8.31inch)
	Total Height	233mm (9.17inch)
Approx. Weight	25.5kg (56.2lbs)	
Internal resistance (Fully charged, 25°C)	Approx. 5.4mΩ	
Capacity affected by temperature (10HR)	40°C	102%
	25°C	100%
	0°C	85%
	-15°C	65%
Self-discharge (25°C)	3 month	Remaining Capacity: 91%
	6 month	Remaining Capacity: 82%
	12 month	Remaining Capacity: 65%
Nominal operating temperature	25°C ± 3°C (77°F ± 5°F)	
Operating temperature range	-15°C ~ 50°C (5°F ~ 122°F)	
Float charging voltage(25°C)	13.50 to 13.80V	
Cyclic charging voltage(25°C)	14.50 to 14.90V	
Maximum charging current	24A	
Terminal material	Copper	
Maximum discharge current	800A(5 sec.)	

- ◆ Absorbent glass mat technology;
- ◆ Recognized by UL & CE;
- ◆ ABS container.

Charging Characteristics(25°C)



Cycle Life(25°C)



Note: Floating life at 20°C designed for 7 to 10 years.

Constant Current Discharge Characteristics (A, 25°C)

F.V/TIME	5min	10min	15min	30min	60min	3h	5h	10h	20h
9.60V	261	179	136	84.8	52.5	20.3	14.6	8.12	4.26
10.2V	248	170	131	81.4	50.4	20.0	14.4	8.08	4.23
10.8V	233	159	124	77.4	47.9	19.6	14.1	8.00	4.20

Constant Power Discharge Characteristics (Watt, 25°C)

F.V/TIME	5min	10min	15min	30min	60min	3h	5h	10h	20h
9.60V	2742	1928	1497	952	593	239	173	97.0	51.1
10.2V	2605	1831	1437	914	569	235	170	96.5	50.8
10.8V	2448	1722	1365	868	541	230	167	95.5	50.4