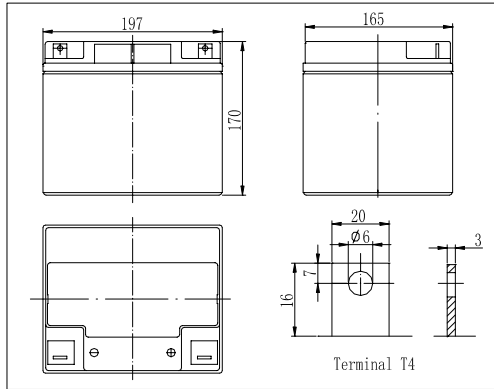


Dimensions

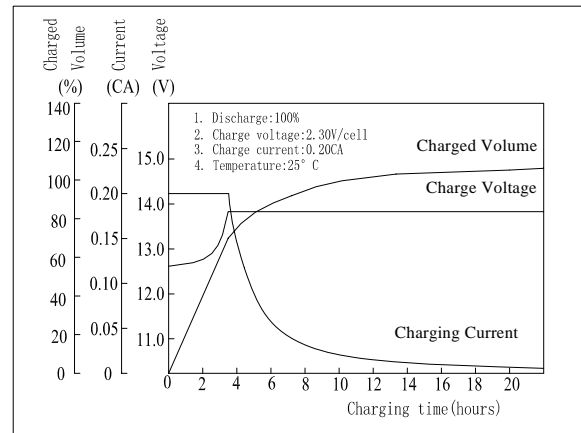


Specifications

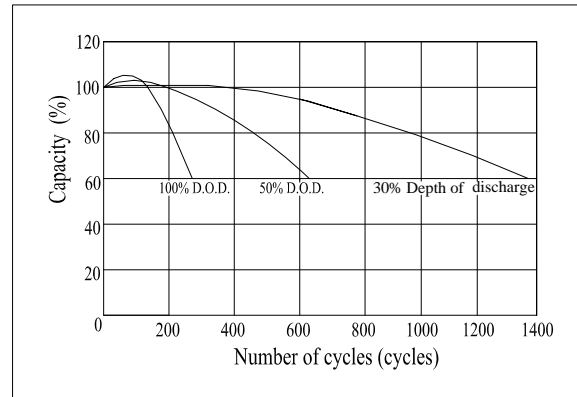
Nominal Voltage		12 V
Capacity(10HR, 25°C)		40Ah
Dimension	Length	197mm (7.76inch)
	Width	165mm (6.50inch)
	Height	170mm (6.69inch)
	Total Height	170mm (6.69inch)
Approx. Weight		13.5kg (29.8lbs)
Internal resistance (Fully charged, 25°C)		Approx. 9.5m Ω
Capacity affected by temperature (10HR)	40°C	102%
	25°C	100%
	0°C	85%
	-15°C	65%
Self-discharge (25°C)	3 month	Remaining Capacity: 91%
	6 month	Remaining Capacity: 82%
	12 month	Remaining Capacity: 65%
Nominal operating temperature		25°C ± 3°C (77°F ± 5°F)
Operating temperature range		-15°C ~ 50°C (5°F ~ 122°F)
Float charging voltage(25°C)		13.50 to 13.80V
Cyclic charging voltage(25°C)		14.50 to 14.90V
Maximum charging current		12A
Terminal material		Copper
Maximum discharge current		400A(5 sec.)

- ◆ Absorbent glass mat technology;
- ◆ Recognized by UL & CE;
- ◆ ABS container.

Charging Characteristics(25°C)



Cycle Life(25°C)



Note: Floating life at 20°C designed for 7 to 10 years.

Constant Current Discharge Characteristics (A, 25°C)

F.V/TIME	5min	10min	15min	30min	60min	3h	5h	10h	20h
9.60V	124	82.6	68.7	40.4	26.3	10.4	7.31	4.06	2.10
10.2V	118	78.5	66.0	38.8	25.2	10.2	7.20	4.02	2.10
10.8V	111	73.8	62.7	36.8	24.0	10.0	7.06	4.00	2.05

Constant Power Discharge Characteristics (Watt, 25°C)

F.V/TIME	5min	10min	15min	30min	60min	3h	5h	10h	20h
9.60V	1302	892	754	453	300	122	86.4	48.5	25.2
10.2V	1237	847	724	435	288	120	85.1	48.0	25.2
10.8V	1163	797	688	413	273	118	83.4	48.0	24.6