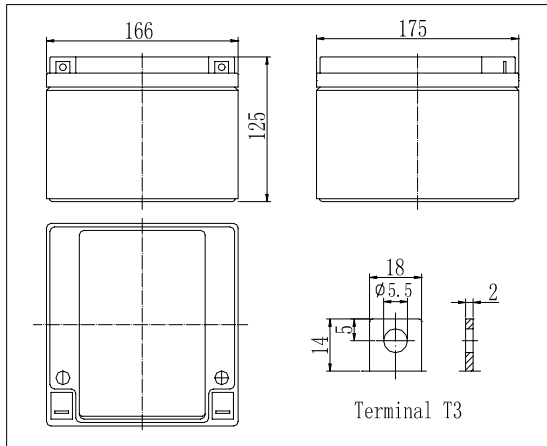


Dimensions

◆ ABS container.

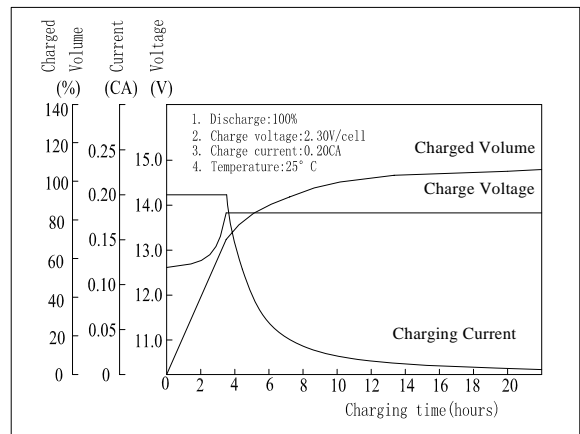


Specifications

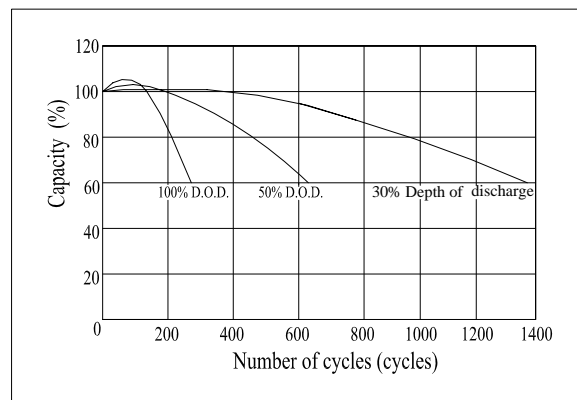
Nominal Voltage		12 V
Capacity(20HR, 25°C)		24Ah
Dimension	Length	166mm (6.54inch)
	Width	175mm (6.89inch)
	Height	125mm (4.92inch)
	Total Height	125mm (4.92inch)
Approx. Weight		8.3kg (18.3lbs)
Internal resistance (Fully charged, 25°C)		Approx. 12m Ω
Capacity affected by temperature (20HR)	40°C	102%
	25°C	100%
	0°C	85%
	-15°C	65%
Self-discharge (25°C)	3 month	Remaining Capacity: 91%
	6 month	Remaining Capacity: 82%
	12 month	Remaining Capacity: 65%
Nominal operating temperature		25°C ± 3°C (77°F ± 5°F)
Operating temperature range		-15°C ~ 50°C (5°F ~ 122°F)
Float charging voltage(25°C)		13.60 to 13.80V
Cyclic charging voltage(25°C)		14.50 to 14.90V
Maximum charging current		7.2A
Terminal material		Copper
Maximum discharge current		360A(5 sec.)

- ◆ Absorbent glass mat technology;
- ◆ Recognized by UL & CE;

Charging Characteristics(25°C)



Cycle Life(25°C)



Note: Floating life at 20°C designed for 3 to 5 years.

Constant Current Discharge Characteristics (A, 25°C)

F.V/TIME	5min	10min	15min	30min	60min	3h	5h	10h	20h
9.60V	93.0	58.8	46.1	26.7	15.8	6.09	4.14	2.24	1.22
10.2V	88.4	55.8	44.2	25.6	15.1	6.00	4.08	2.22	1.21
10.8V	83.1	52.5	42.0	24.3	14.4	5.88	4.00	2.21	1.20

Constant Power Discharge Characteristics (Watt, 25°C)

F.V/TIME	5min	10min	15min	30min	60min	3h	5h	10h	20h
9.60V	1038	663	525	306	182	72.3	49.4	26.9	14.6
10.2V	986	630	504	293	175	71.3	48.7	26.7	14.5
10.8V	927	592	479	279	166	69.9	47.7	26.7	14.4

