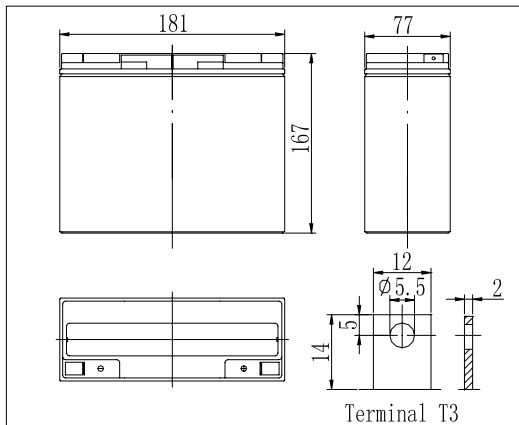


Dimensions



Specifications

Nominal Voltage	12 V	
Capacity(20HR, 25°C)	20 Ah	
Dimension	Length	181mm (7.13inch)
	Width	77mm (3.03inch)
	Height	167mm (6.57inch)
	Total Height	167mm (6.57inch)
Approx. Weight	5.8kg (12.8lbs)	
Internal resistance (Fully charged, 25°C)	Approx. 15mΩ	
Capacity affected by temperature (20HR)	40°C	102%
	25°C	100%
	0°C	85%
	-15°C	65%
Self-discharge (25°C)	3 month	Remaining Capacity: 91%
	6 month	Remaining Capacity: 82%
	12 month	Remaining Capacity: 65%
Nominal operating temperature	25°C ± 3°C (77°F ± 5°F)	
Operating temperature range	-15°C ~ 50°C (5°F ~ 122°F)	
Float charging voltage(25°C)	13.60 to 13.80V	
Cyclic charging voltage(25°C)	14.50 to 14.90V	
Maximum charging current	6A	
Terminal material	Copper	
Maximum discharge current	300A(5 sec.)	

- ◆ Absorbent glass mat technology;
- ◆ Recognized by UL & CE;
- ◆ ABS container.

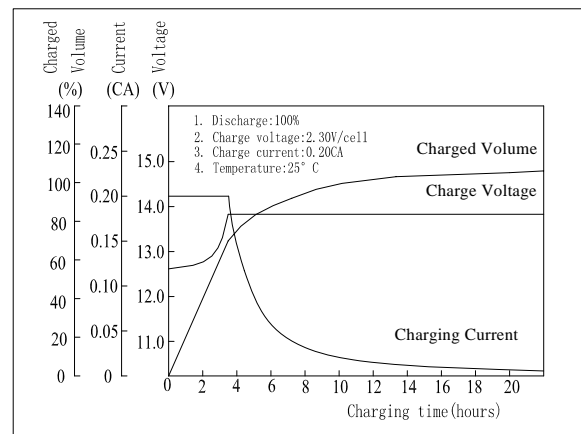
Constant Current Discharge Characteristics (A, 25°C)

F.V/TIME	5min	10min	15min	30min	60min	3h	5h	10h	20h
9.60V	77.5	49.0	38.4	22.2	13.1	5.08	3.45	1.87	1.02
10.2V	73.6	46.5	36.8	21.3	12.6	5.00	3.40	1.85	1.01
10.8V	69.2	43.7	35.0	20.3	12.0	4.90	3.33	1.84	1.00

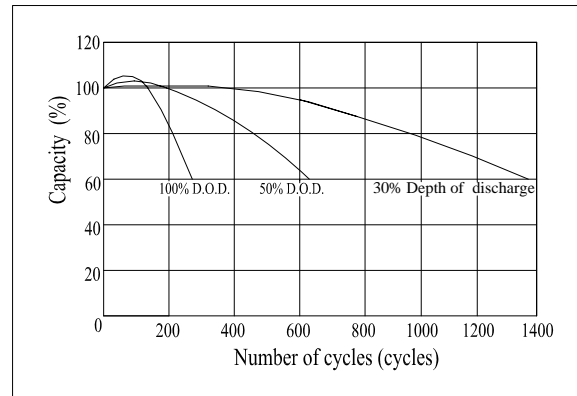
Constant Power Discharge Characteristics (Watt, 25°C)

F.V/TIME	5min	10min	15min	30min	60min	3h	5h	10h	20h
9.60V	865	552	438	255	152	60.3	41.2	22.4	12.2
10.2V	822	525	420	244	146	59.4	40.6	22.2	12.1
10.8V	773	493	399	232	139	58.2	39.8	22.2	12.0

Charging Characteristics(25°C)



Cycle Life(25°C)



Note: Floating life at 20°C designed for 3 to 5 years.