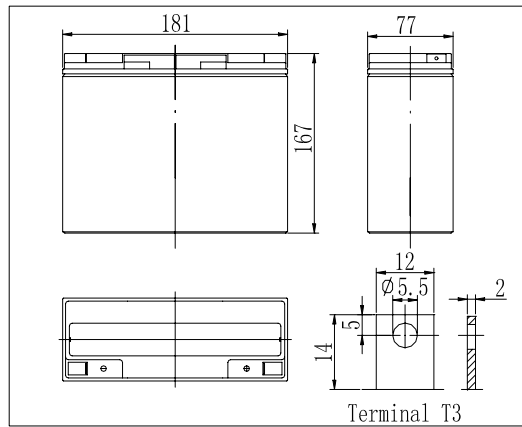


Dimensions



Specifications

Nominal Voltage	12 V	
Capacity(20HR, 25°C)	18Ah	
Dimension	Length	181mm (7.13inch)
	Width	77mm (3.03inch)
	Height	167mm (6.57inch)
	Total Height	167mm (6.57inch)
Approx. Weight	5.5kg (12.1lbs)	
Internal resistance (Fully charged, 25°C)	Approx. 17mΩ	
Capacity affected by temperature (20HR)	40°C	102%
	25°C	100%
	0°C	85%
	-15°C	65%
Self-discharge (25°C)	3 month	Remaining Capacity: 91%
	6 month	Remaining Capacity: 82%
	12 month	Remaining Capacity: 65%
Nominal operating temperature	25°C ± 3°C (77°F ± 5°F)	
Operating temperature range	-15°C ~ 50°C (5°F ~ 122°F)	
Float charging voltage(25°C)	13.60 to 13.80V	
Cyclic charging voltage(25°C)	14.50 to 14.90V	
Maximum charging current	5.4A	
Terminal material	Copper	
Maximum discharge current	270A(5 sec.)	

- ◆ Absorbent glass mat technology;
- ◆ Recognized by UL & CE;
- ◆ ABS container.

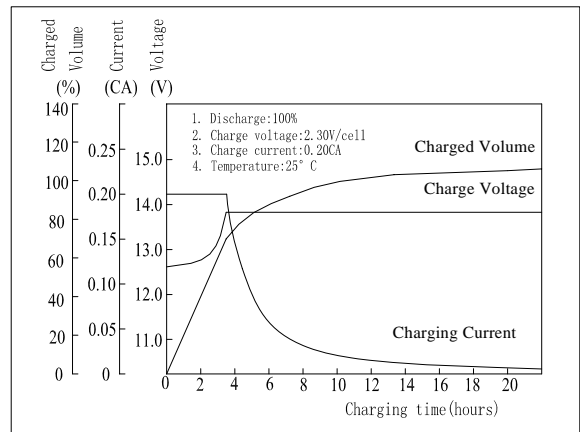
Constant Current Discharge Characteristics (A, 25°C)

F.V/TIME	5min	10min	15min	30min	60min	3h	5h	10h	20h
9.60V	69.8	44.1	34.5	20.0	11.8	4.57	3.11	1.68	0.91
10.2V	66.3	41.9	33.2	19.2	11.3	4.50	3.06	1.67	0.91
10.8V	62.3	39.3	31.5	18.2	10.8	4.41	3.00	1.66	0.90

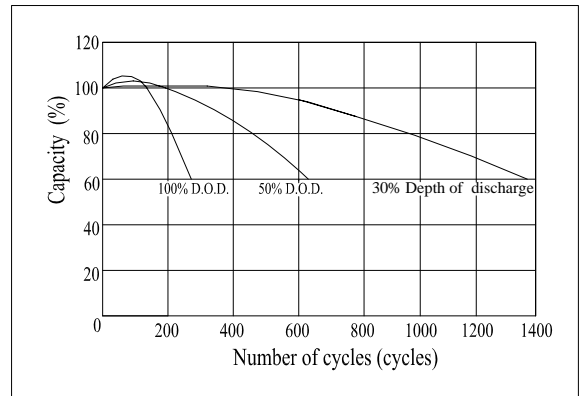
Constant Power Discharge Characteristics (Watt, 25°C)

F.V/TIME	5min	10min	15min	30min	60min	3h	5h	10h	20h
9.60V	779	497	394	229	137	54.3	37.1	20.2	11.0
10.2V	740	472	378	220	131	53.5	36.5	20.0	10.9
10.8V	695	444	359	209	125	52.4	35.8	20.0	10.8

Charging Characteristics(25°C)



Cycle Life(25°C)



Note: Floating life at 20°C designed for 3 to 5 years.