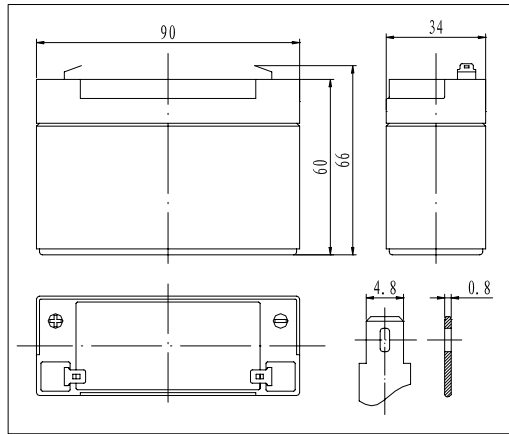
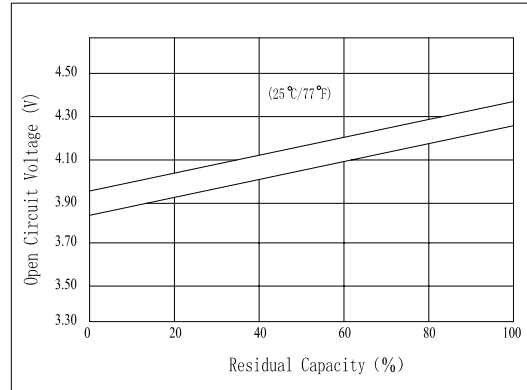


Dimensions



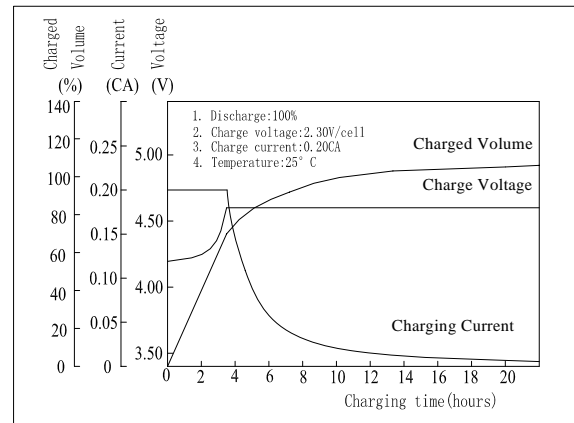
The Relationship for Open Circuit Voltage and Residual Capacity (25°C)



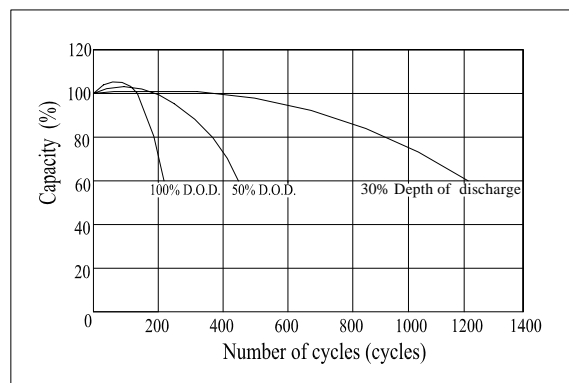
Specifications

Nominal Voltage	4 V	
Capacity(20HR, 25°C)	3.2 Ah	
Dimension	Length	90mm (3.67inch)
	Width	34mm (1.39inch)
	Height	60mm (2.45inch)
	Total Height	66mm (2.69inch)
Approx. Weight	0.45kg (0.99lbs)	
Internal resistance (Fully charged, 25°C)	Approx. 22mΩ	
Capacity affected by temperature (20HR)	40°C	102%
	25°C	100%
	0°C	85%
	-15°C	65%
Self-discharge (25°C)	3 month	Remaining Capacity: 91%
	6 month	Remaining Capacity: 82%
	12 month	Remaining Capacity: 65%
Nominal operating temperature	25°C ± 3°C (77°F ± 5°F)	
Operating temperature range	-15°C ~ 50°C (5°F ~ 122°F)	
Float charging voltage(25°C)	4.50 to 4.60V	
Cyclic charging voltage(25°C)	4.85 to 4.95V	
Maximum charging current	0.96A	
Terminal material	Copper	
Maximum discharge current	48A(5 sec.)	

Charging Characteristics(25°C)



Cycle Life(25°C)



Note: Floating life at 20°C designed for 3 to 5 years.

- ◆ Absorbent glass mat technology;
- ◆ Recognized by UL & CE;
- ◆ ABS container.

Constant Current Discharge Characteristics (A, 25°C)

F.V/TIME	5min	10min	15min	30min	60min	3h	5h	10h	20h
3.20V	12.2	7.68	6.08	3.52	2.08	0.81	0.55	0.30	0.16
3.40V	11.6	7.30	5.84	3.38	2.00	0.80	0.54	0.30	0.16
3.60V	10.9	6.86	5.54	3.21	1.90	0.78	0.53	0.29	0.16

Constant Power Discharge Characteristics (Watt, 25°C)

F.V/TIME	5min	10min	15min	30min	60min	3h	5h	10h	20h
3.20V	45.2	28.9	23.1	13.4	8.03	3.22	2.20	1.20	0.65
3.40V	43.0	27.4	22.2	12.9	7.72	3.17	2.17	1.18	0.64
3.60V	40.4	25.8	21.1	12.3	7.33	3.10	2.12	1.18	0.64