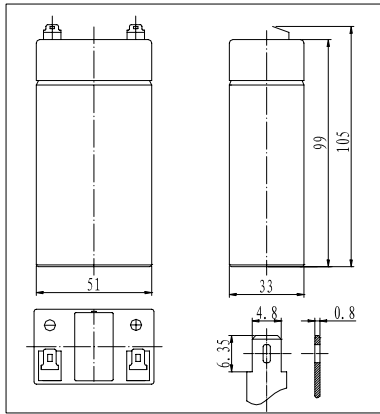
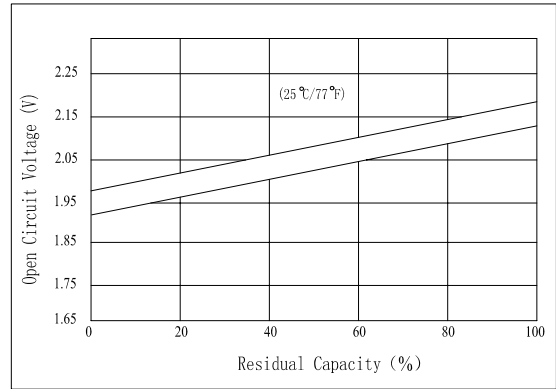


.Dimensions



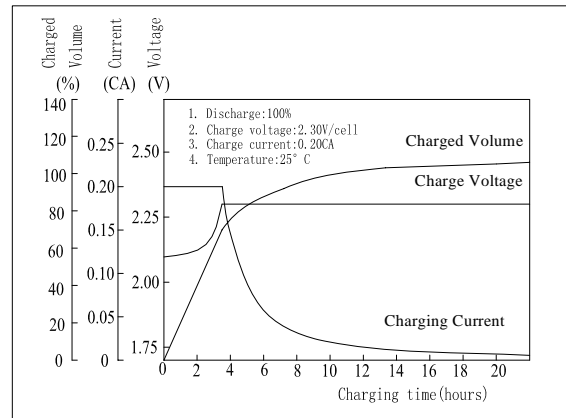
The Relationship for Open Circuit Voltage and Residual Capacity (25°C)



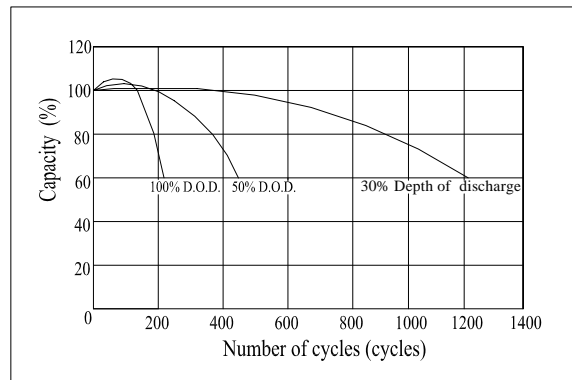
Specifications

Nominal Voltage	2 V	
Capacity(20HR, 25°C)	6 Ah	
Dimension	Length	51mm (2.01inch)
	Width	33mm (1.30inch)
	Height	99mm (3.90inch)
	Total Height	105mm (4.13inch)
Approx. Weight	0.36kg (0.79lbs)	
Internal resistance (Fully charged, 25°C)	Approx. 7m Ω	
Capacity affected by temperature (20HR)	40°C	102%
	25°C	100%
	0°C	85%
	-15°C	65%
Self-discharge (25°C)	3 month	Remaining Capacity: 91%
	6 month	Remaining Capacity: 82%
	12 month	Remaining Capacity: 65%
Nominal operating temperature	25°C ± 3°C (77°F ± 5°F)	
Operating temperature range	-15°C ~ 50°C (5°F ~ 122°F)	
Float charging voltage(25°C)	2.27 to 2.30V	
Cyclic charging voltage(25°C)	2.42 to 2.48V	
Maximum charging current	1.8A	
Terminal material	Copper	
Maximum discharge current	90A(5 sec.)	

Charging Characteristics(25°C)



Cycle Life(25°C)



Note: Floating life at 20°C designed for 3 to 5 years.

- ◆ Absorbent glass mat technology;
- ◆ Recognized by UL & CE;
- ◆ ABS container.

Constant Current Discharge Characteristics (A, 25°C)

F.V/TIME	5min	10min	15min	30min	60min	3h	5h	10h	20h
1.60V	22.2	13.8	10.8	6.48	3.72	1.43	1.00	0.55	0.305
1.70V	21.1	13.1	10.4	6.22	3.57	1.41	0.99	0.55	0.302
1.80V	19.8	12.3	9.85	5.91	3.39	1.38	0.97	0.55	0.300

Constant Power Discharge Characteristics (Watt, 25°C)

F.V/TIME	5min	10min	15min	30min	60min	3h	5h	10h	20h
1.60V	41.3	25.9	20.5	12.4	7.18	2.83	2.00	1.11	0.61
1.70V	39.2	24.6	19.7	11.9	6.89	2.79	1.97	1.10	0.60
1.80V	36.9	23.2	18.7	11.3	6.55	2.74	1.93	1.10	0.60