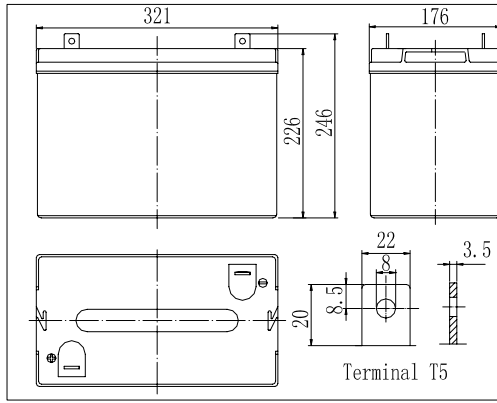
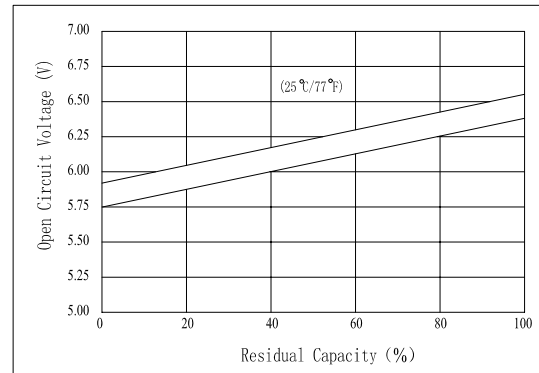


Dimensions



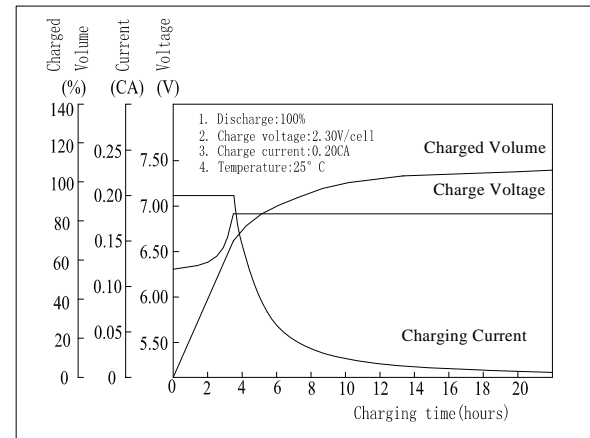
The Relationship for Open Circuit Voltage and Residual Capacity (25°C)



Specifications

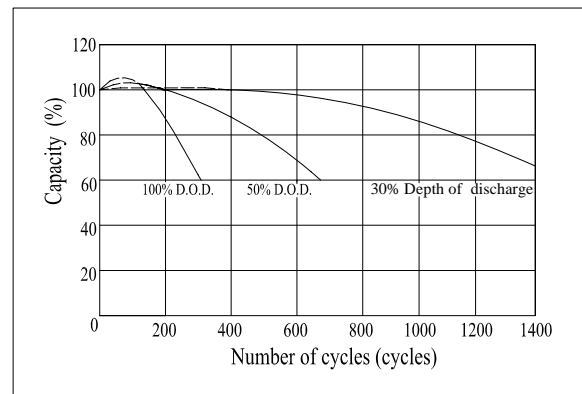
Nominal Voltage		6 V
Capacity(10HR, 25°C)		200 Ah
Dimension	Length	321mm (12.64inch)
	Width	176mm (6.93inch)
	Height	226mm (8.90inch)
	1.7	246mm (9.69inch)
Approx. Weight		32.5kg (72.3lbs)
Internal resistance (Fully charged, 25°C)		Approx. 3.4mΩ
Capacity affected by temperature (10HR)	40°C	102%
	25°C	100%
	0°C	85%
	-15°C	65%
Self-discharge (25°C)	3 month	Remaining Capacity: 91%
	6 month	Remaining Capacity: 82%
	12 month	Remaining Capacity: 65%
Nominal operating temperature		25°C ± 3°C (77°F ± 5°F)
Operating temperature range		-15°C ~ 50°C (5°F ~ 122°F)
Float charging voltage(25°C)		6.75 to 6.90V
Cyclic charging voltage(25°C)		7.05 to 7.20
Maximum charging current		50A
Terminal material		Copper
Maximum discharge current		1600A(5 sec.)

Charging Characteristics(25°C)



- ◆ Gelled electrolyte technology;
- ◆ AGM separator;
- ◆ Recognized by UL & CE;
- ◆ ABS container.

Cycle Life(25°C)



Note: Floating life at 20°C designed for 12 years.

Constant Current Discharge Characteristics (A, 25°C)

F.V/TIME	5min	10min	15min	30min	60min	3h	5h	10h	20h
4.80V	432	330	304	196	124	48.7	33.3	20.3	10.5
5.10V	410	314	292	188	119	48.0	32.8	20.1	10.4
5.40V	386	295	277	179	113	47.0	32.1	20.0	10.3

Constant Power Discharge Characteristics (Watt, 25°C)

F.V/TIME	5min	10min	15min	30min	60min	3h	5h	10h	20h
4.80V	2268	1782	1669	1100	707	286	197	121	62.7
5.10V	2155	1693	1602	1056	679	282	194	120	62.2
5.40V	2025	1591	1522	1003	645	277	190	119	61.8

Note: we can produce other type gelled batteries according with clients requirements.