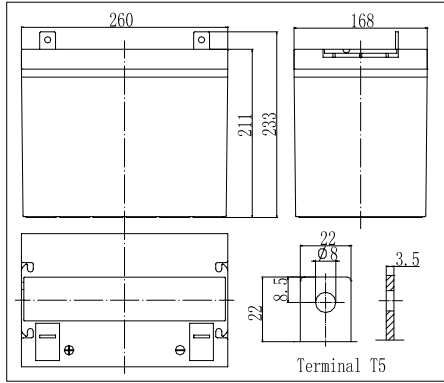
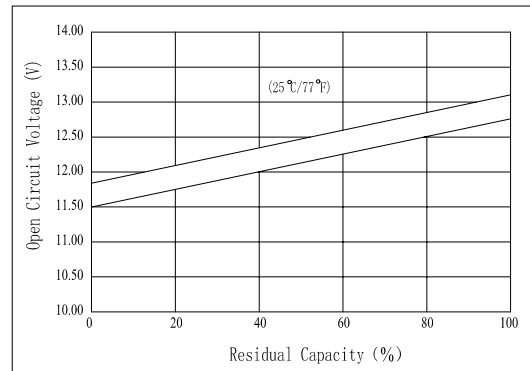


Dimensions



The Relationship for Open Circuit Voltage and Residual Capacity (25°C)

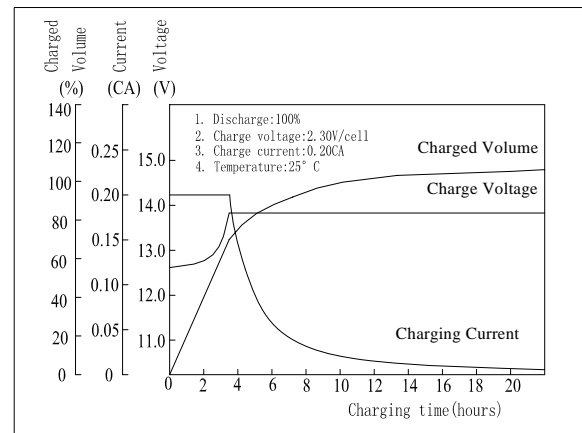


Specifications

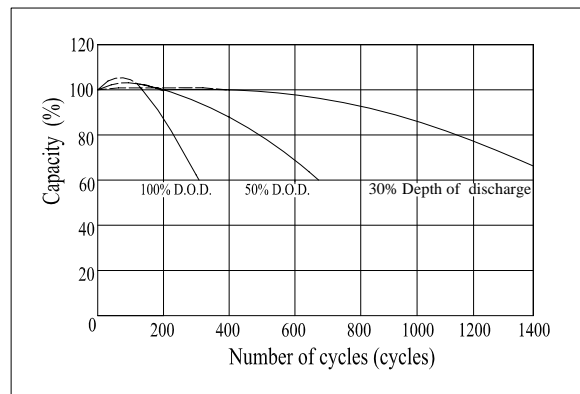
Nominal Voltage		12 V
Capacity(10HR, 25°C)		60Ah
Dimension	Length	260mm (10.24inch)
	Width	168mm (6.61inch)
	Height	211mm (8.31inch)
	Total Height	233mm (9.17inch)
Approx. Weight		20.8kg (45.9lbs)
Internal resistance (Fully charged, 25°C)		Approx.6.3m Ω
Capacity affected by temperature (10HR)	40°C	102%
	25°C	100%
	0°C	85%
	-15°C	65%
Self-discharge (25°C)	3 month	Remaining Capacity: 91%
	6 month	Remaining Capacity: 82%
	12 month	Remaining Capacity: 65%
Nominal operating temperature		25°C ± 3°C (77°F ± 5°F)
Operating temperature range		-15°C ~ 50°C (5°F ~ 122°F)
Float charging voltage(25°C)		13.50 to 13.80V
Cyclic charging voltage(25°C)		14.10 to 14.40V
Maximum charging current		15A
Terminal material		Copper
Maximum discharge current		600A(5 sec.)

- ◆ Gelled electrolyte technology;
- ◆ AGM separator;
- ◆ Recognized by UL & CE;
- ◆ ABS container.

Charging Characteristics(25°C)



Cycle Life (25°C)



Note: Floating life at 20°C designed for 12 years.

Constant Current Discharge Characteristics (A, 25°C)

F.V/TIME	5min	10min	15min	30min	60min	3h	5h	10h	20h
9.60V	130	99.0	91.2	58.8	37.2	14.6	9.99	6.09	3.14
10.2V	123	94.1	87.6	56.4	35.7	14.4	9.84	6.04	3.11
10.8V	116	88.4	83.2	53.6	33.9	14.1	9.64	6.00	3.09

Constant Power Discharge Characteristics (Watt, 25°C)

F.V/TIME	5min	10min	15min	30min	60min	3h	5h	10h	20h
9.60V	1361	1069	1001	660	424	172	118	72.7	37.6
10.2V	1293	1016	961	633	407	169	116	72.1	37.3
10.8V	1215	955	913	602	387	166	114	71.6	37.1

Note: we can produce other type gelled batteries according with clients requirements.