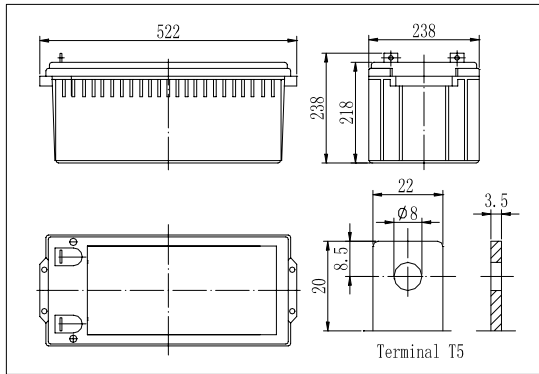
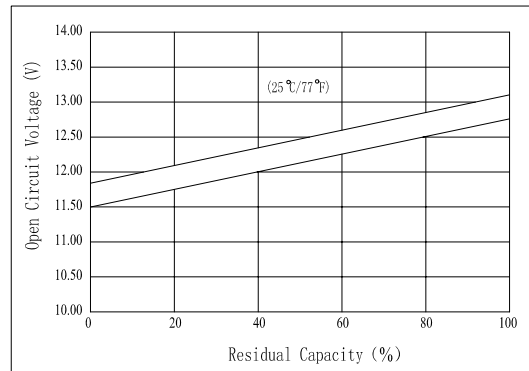


Dimensions



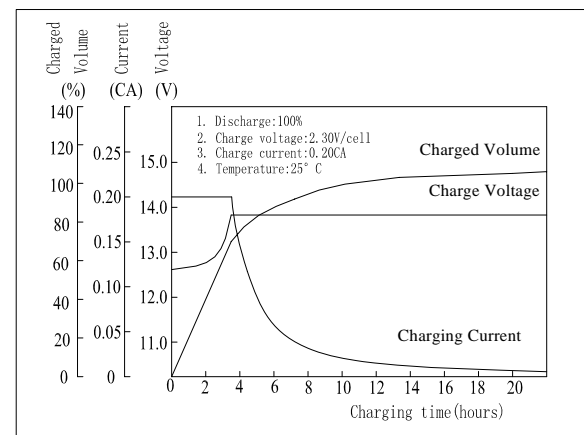
The Relationship for Open Circuit Voltage and Residual Capacity (25°C)



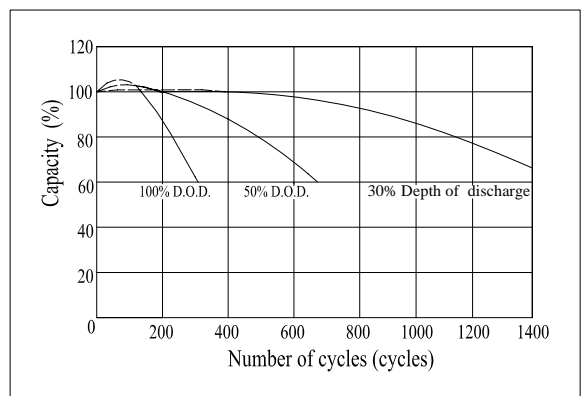
Specifications

Nominal Voltage		12 V
Capacity(10HR, 25°C)		200 Ah
Dimension	Length	522mm (20.55inch)
	Width	238mm (9.37inch)
	Height	218mm (8.58inch)
	Total Height	238mm (9.37inch)
Approx. Weight		66kg (145.5lbs)
Internal resistance (Fully charged, 25°C)		Approx. 3.3mΩ
Capacity affected by temperature (20HR)	40°C	102%
	25°C	100%
	0°C	85%
	-15°C	65%
Self-discharge (25°C)	3 month	Remaining Capacity: 91%
	6 month	Remaining Capacity: 82%
	12 month	Remaining Capacity: 65%
Nominal operating temperature		25°C ± 3°C (77°F ± 5°F)
Operating temperature range		-15°C ~ 50°C (5°F ~ 122°F)
Float charging voltage(25°C)		13.50 to 13.80V
Cyclic charging voltage(25°C)		14.10 to 14.40V
Maximum charging current		50A
Terminal material		Copper
Maximum discharge current		1440A(5 sec.)

Charging Characteristics(25°C)



Cycle Life (25°C)



Note: Floating life at 20°C designed for 12 years.

- ◆ Gelled electrolyte technology;
- ◆ AGM separator;
- ◆ Recognized by UL & CE;
- ◆ ABS container.

Constant Current Discharge Characteristics (A, 25°C)

F.V/TIME	5min	10min	15min	30min	60min	3h	5h	10h	20h
1.60V/cell	432	330	304	196	124	48.7	33.3	20.3	10.5
1.70V/cell	410	314	292	188	119	48.0	32.8	20.1	10.4
1.80V/cell	386	295	277	179	113	47.0	32.1	20.0	10.3

Constant Power Discharge Characteristics (Watt, 25°C)

F.V/TIME	5min	10min	15min	30min	60min	3h	5h	10h	20h
1.60V/cell	756	594	556	367	236	95.5	65.6	40.4	20.9
1.70V/cell	718	564	534	352	226	94.1	64.6	40.0	20.7
1.80V/cell	675	530	507	334	215	92.2	63.3	40.0	20.6

Note: we can produce other type gelled batteries according with clients requirements.